

Cruisin' The Coast 2025

Oct. 5-12

Welcome to the City of Biloxi and another year of Cruisin'.

Here are some things to keep in mind:

- Do not block traffic. If an officer is directing traffic, follow instructions.
- Obey posted speed limits and traffic signs.
- Park only in marked areas, no parking in the median or on sidewalks. Respect private property.
- Burnouts are not allowed.
- No riding on tailgates, bumpers, roofs or hoods of vehicles.
- No glass containers.
- No underage drinking allowed.
- No animals allowed in any event area.
- No littering.
- Amplified sound is allowed only by permit approved by the police department.
- For safety, only cross roadways at designated locations such as a corner or crosswalk.
- Do not obstruct boardwalks or sidewalks; pedestrians only.
- Do not move or go around officially placed barricades.
- All service drives on U.S. 90 close at 10 p.m. unless posted otherwise. However, service drives may be closed earlier at the discretion of the Biloxi Police Dept.
- A helmet must be worn by all operators and passengers on a motorcycle.
- ATVs, UTVs, or any other unlicensed vehicle are not allowed on the roadway, on the beach, or on sidewalks or boardwalks unless being operated as an emergency vehicle.
- Licensed low-speed vehicles (such as golf carts) allowed only on designated roadways unless registered as a parade participant.

We've earned a reputation as the "Playground of the South" and we're asking you to help us keep it a safe playground for everyone. **So keep your cool, keep it clean and keep it respectful.**

(228) 435-6300

Visit online at biloxi.ms.us

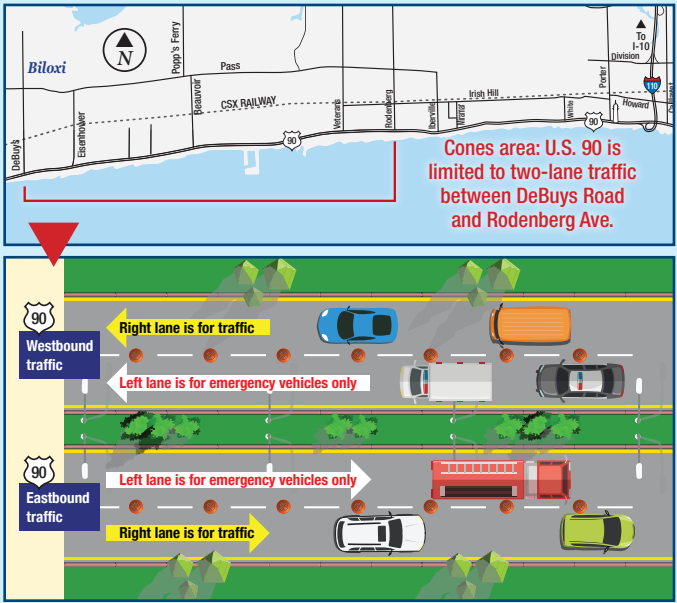


For traffic updates to your cell phone, text **BILOXI** to 99411



The traffic plan

Traffic cones will be more spaced out. As part of the city's special events traffic plan, the city may limit travel lanes to the outside, right-hand lane and use the left-hand lane for emergency vehicles only. This is only if necessary. You will be notified via text message, by texting BILOXI to 99411, if this occurs. Cones will be from DeBuys Road to Rodenberg Ave.



For the Downtown Biloxi Block Party, which takes place Wednesday, Oct. 8, from 8 a.m. to 3 p.m., Cruisers should arrive as early as 5 a.m. to park. To enter your vehicle into the parking and display area, Cruisers should enter on Reynoir at MLK Blvd., and you'll be directed to downtown parking. Once parked, you are there for the duration of the event.

Remove vehicles ASAP after event. If you are directed by police officers to park on a street, not in a parking slot, you must move your vehicle by 3 p.m.

