

MEMORANDUM

January 4, 2022

To: Mayor Andrew Gilich
City Council Members
Mike Leonard, CAO
Jerry Creel, Director of Community Development
Eric Nolan, Arborist

From: City of Biloxi Tree Committee
Tracy Wyman, Chair (Ex-officio); Robin Lang (1); Shirley Robinson (2); Matt Dubaz (3); Susan Peterson (4); Carroll Campbell, Vice -Chair (5); Christine Davis (6); Pamela Barlow (7)

Re: 2021-1201 Eula Cove Townhomes / Tree Hearing

The Eula Cove Townhomes project proposes the removal of 13 protected trees for the multi-family residential development. The protected trees are noted in the attached plan and in the table below follows:

PROTECTED TREES TO REMAIN	
8" LIVE OAK	24" LIVE OAK
8" LIVE OAK	24" LIVE OAK
9" LIVE OAK	24" LIVE OAK
10" LIVE OAK	30" LIVE OAK
10" LIVE OAK	30" LIVE OAK
12" LIVE OAK	36" LIVE OAK
12" LIVE OAK	36" LIVE OAK
15" LIVE OAK	36" LIVE OAK
15" LIVE OAK	18" POST OAK
15" LIVE OAK	18" POST OAK
15" LIVE OAK	20" DOUBLE POST OAK
18" LIVE OAK	24" POST OAK
18" LIVE OAK	18" WHITE OAK
18" LIVE OAK	18" WHITE OAK
20" LIVE OAK	18" WHITE OAK
20" LIVE OAK	18" WHITE OAK
20" LIVE OAK	24" RED OAK
20" LIVE OAK	24" WHITE OAK
24" LIVE OAK	24" WHITE OAK

PROTECTED TREES TO BE REMOVED	
(A)	18" WHITE OAK
(B)	10" LIVE OAK
(C)	15" LIVE OAK
(D)	18" LIVE OAK
(E)	10" MAGNOLIA
(F)	18" LIVE OAK
(G)	24" LIVE OAK
(H)	DOUBLE 18" LIVE OAK
(I)	30" BLACK GUM
(J)	18" LIVE OAK
(K)	24" LIVE OAK
(L)	24" WHITE OAK
(M)	12" LIVE OAK

— REFERENCE PLAN VIEW BELOW (TYP)

The Biloxi Tree Committee has reviewed this site plan and visited the site, in consultation with the City Arborist who also visited the site with the developer. We provide the following recommendations:

1. The Tree Committee acknowledges the efforts the developer has made to retain 19 protected trees, including retaining the largest trees on the site. The 13 protected trees proposed for removal are reasonable for this project, and thus the Tree Committee recommends approval of the application with mitigation and tree protection as per the LDO and as outlined below.
2. Tree Protection Plan: Tree protection notes and diagram should align with the LDO as follows:
 - o Fencing is to be erected no closer than 1' to the tree's drip line (existing canopy) before grading or other development activity begins.
 - o Fencing or roped off area must be well marked as "TREE SAVE AREA: KEEP OUT."
 - o Any tree roots must be cut clean (rather than torn by heavy equipment)
 - o No construction, grading, equipment or material storage, or any other activity shall be allowed within the fenced tree save area. Fencing shall be maintained until after the final site inspection.

3. Mitigation: Whatever the final determination by the Planning Commission, the Tree Committee recommends full mitigation for protected trees removed as required by the Ordinance at a ratio of 3:1 (39 trees of protected species) with the following species reflective of the species being removed:

70% Live Oak
15% White Oak or Bald Cypress
15% Southern Magnolia

Mitigation should occur on-site where feasible and off-site where not feasible. Please refer to the *Suggested Mitigation Sites*, attached hereto for off-site plantings.

OTHER IMPORTANT NOTES:

- The tree survey including the table of protected trees, notation of exact species and DBH of each protected tree is sufficient. For future reference, please utilize the common graphic standard of an "X" through tree symbols that are proposed for removal.
- A kind reminder that Site Plans and supporting documents should be delivered by the City Arborist to the Tree Committee far enough in advance of a Tree Hearing to allow sufficient time for a site visit and written recommendations. This was an oversight in this case, nevertheless warrants the reminder.

City of Biloxi Tree Committee

Suggested Tree Mitigation Sites

General Suggestions

- On the same site where the tree was removed, when space allows
- Sites where irrigation currently exists, or is feasible for immediate installation

Specific Locations

Streets

- Popp's Ferry Road from the nearest cross street to the Dog Park eastwards
- Howard Ave./Downtown restoration project (Ward 2)

Community Centers & Sports Complexes

- Holloway Sports complex
- Margaret Sherry Soccer Fields

Parks

- Popp's Ferry Road Dog Park
- Edgewater Park on Edgewater Drive
- Hiller Park
- Barhonovich Park at Porter Avenue (Ward 1)
- Savarro Park on Irish Hill
- Rosetti Park on Crawford Street
- City Park on Kensington Drive
- Henry Beck Park (Ward 2)

Schools – *With students helping to nurture through establishment period.*

- Biloxi High School
- Biloxi Junior High School
- Biloxi Upper Elementary
- Gorenflo Elementary
- Jeff Davis Elementary
- Nichols Elementary
- North Bay Elementary
- Pops Ferry Elementary

Other Public Spaces

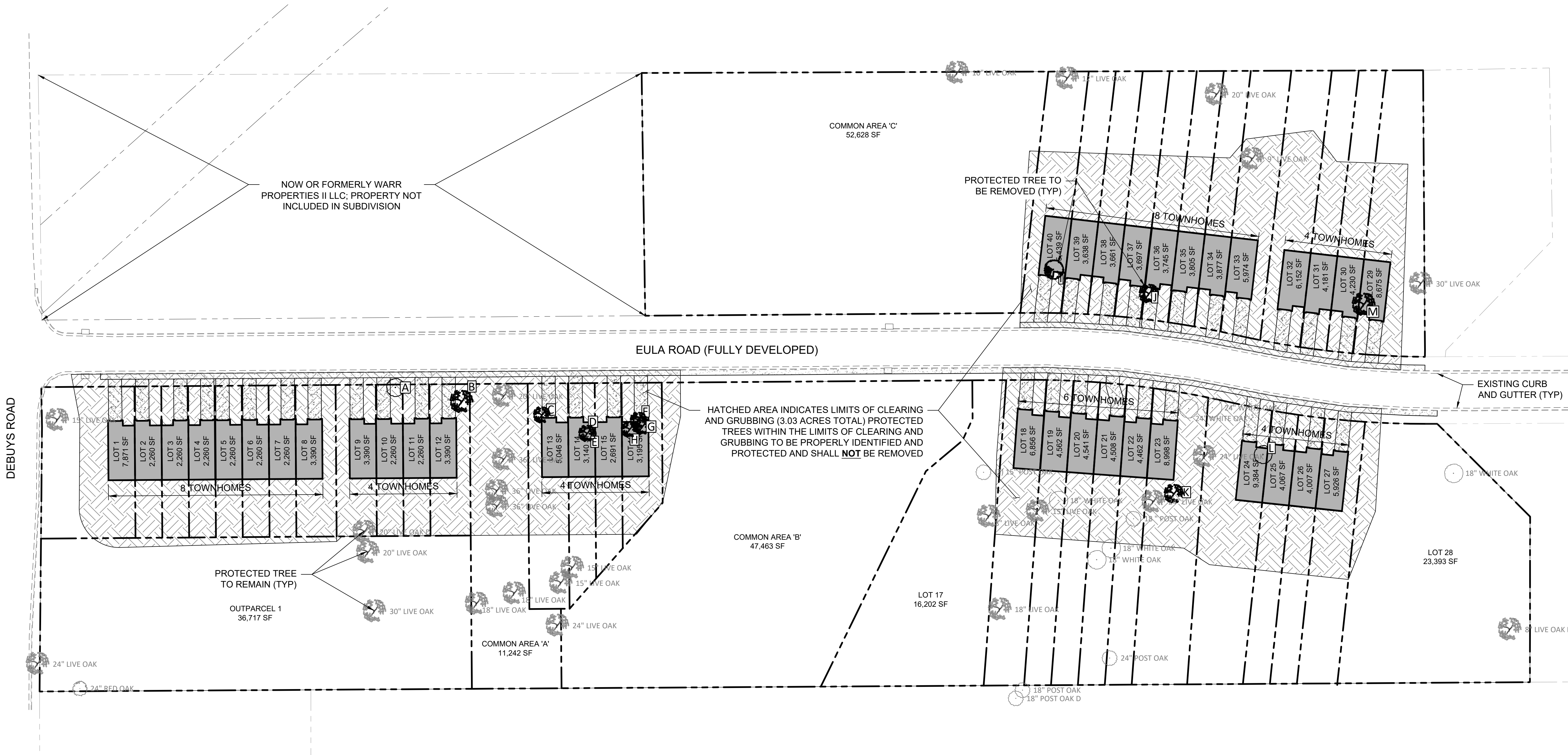
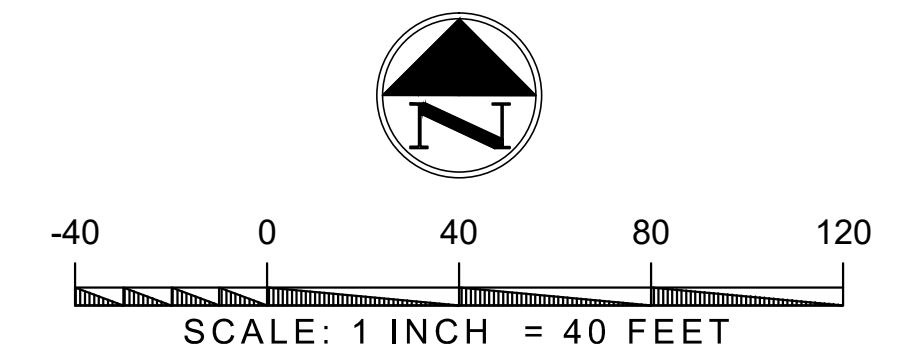
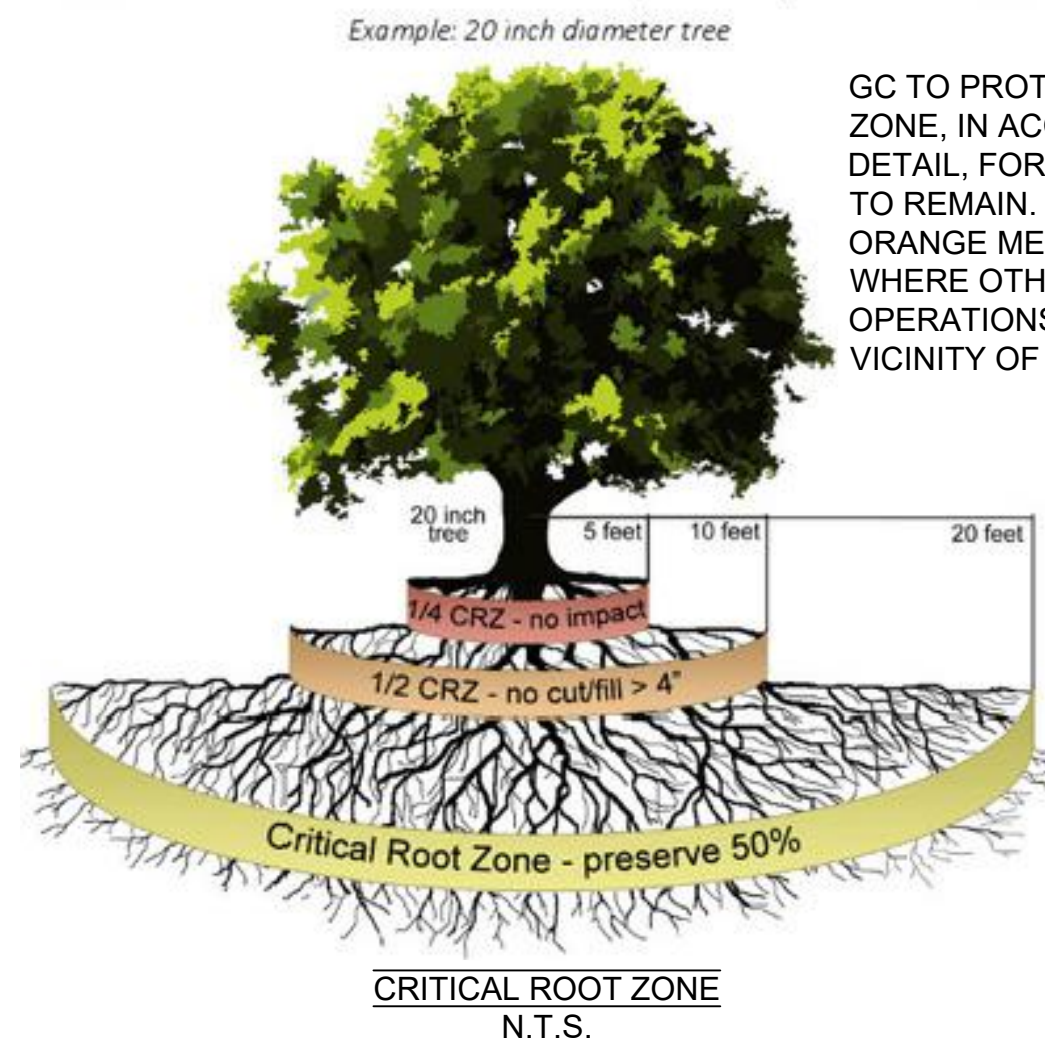
- Biloxi Cemetery
- Property just east of the Ohr Museum on Hwy 90 (Ward 1)
- Biloxi Town Green (Ward 2)
- Mardi Gras Museum Property (Ward 2)
- Tree wells on Howard Ave in front of the Library

PROTECTED TREES TO REMAIN	
8" LIVE OAK	24" LIVE OAK
8" LIVE OAK	24" LIVE OAK
9" LIVE OAK	24" LIVE OAK
10" LIVE OAK	30" LIVE OAK
10" LIVE OAK	30" LIVE OAK
12" LIVE OAK	36" LIVE OAK
12" LIVE OAK	36" LIVE OAK
15" LIVE OAK	36" LIVE OAK
15" LIVE OAK	18" POST OAK
15" LIVE OAK	18" POST OAK
15" LIVE OAK	20" DOUBLE POST OAK
18" LIVE OAK	24" POST OAK
18" LIVE OAK	18" WHITE OAK
18" LIVE OAK	18" WHITE OAK
20" LIVE OAK	18" WHITE OAK
20" LIVE OAK	18" WHITE OAK
20" LIVE OAK	24" RED OAK
20" LIVE OAK	24" WHITE OAK
24" LIVE OAK	24" WHITE OAK

PROTECTED TREES TO BE REMOVED	
(A)	18" WHITE OAK
(B)	10" LIVE OAK
(C)	15" LIVE OAK
(D)	18" LIVE OAK
(E)	10" MAGNOLIA
(F)	18" LIVE OAK
(G)	24" LIVE OAK
(H)	DOUBLE 18" LIVE OAK
(I)	30" BLACK GUM
(J)	18" LIVE OAK
(K)	24" LIVE OAK
(L)	24" WHITE OAK
(M)	12" LIVE OAK

REFERENCE PLAN VIEW BELOW (TYP)

The Critical Root Zone - Development Impact Zones



PROJECT EULA COVE TOWNHOMES	PROJECT PHASE PRELIMINARY - NOT FOR CONSTRUCTION	PROJECT ADDRESS EULA ROAD; EAST OF DEBUYS ROAD	DATE DEC 2021	PROJECT # 010
NO.	DATE	REVISION DESCRIPTION	BY	

TREE PRESERVATION PLAN

SHEET TYPE

SHEET NUMBER	C1.1
--------------	------