

MEMORANDUM

Date: September 2, 2021

To: Mayor Andrew Gilich
City Council Members
Mike Leonard, CAO
Jerry Creel, Director of Community Development
Eric Nolan, Arborist

From: City of Biloxi Tree Committee Tracy Wyman, Chair (Ex-officio); Robin Lang (1); Shirley Robinson (2); Matt Dubaz (3); Susan Peterson (4); Carroll Campbell, Vice -Chair (5); Christine Davis (6); Pamela Barlow (7)

Re: 20211021_080820 Gulf Coast Regional Tower, Overflow Parking

The Gulf Coast Realty proposes the removal of 5 protected trees for an overflow parking area to the Gulf Coast Regional Tower, as follows:

Live Oaks	1
Other Oaks	4
<hr/>	
	5

The Biloxi Tree Committee has reviewed this application and visited the site, in consultation with the City Arborist, and provides the following recommendations:

1. The Tree Committee supports the opportunity for parking in this area, yet also supports the opportunity for some of the proposed tree removals to remain. At the site visit, it was noted that those currently using the grassed parking area choose the spots under the trees, apparently for the shade these mature trees provide.
2. The Committee thus recommends:
 - a) The 24" Live Oak near the Southwest corner of the lot remain protected.
 - b) The 22" Oak at the center of the proposed parking lot remain protected.
 - c) The 36" Oak near the Northeast corner of the proposed parking lot remain protected.

Protecting these trees would require the sacrifice of 3 proposed parking spaces and necessitate the use of permeable paving in the adjacent spaces to protect the root zones as permitted by the Ordinance. See Alternative paving materials, Section 23-6-2 C) 4), Alternative materials.) *Please see the annotations to the drawing, attached.*

3. Mitigation: Whatever the final determination by the Planning Commission, the Tree Committee recommends full mitigation for protected trees removed as required by the Ordinance at a ratio of 3:1.
4. Mitigation Species: The Tree Committee advises replanting/mitigation with Live Oaks (*Quercus virginiana*) on-site where feasible and off-site as necessary according to the location resource attached hereto.
5. Tree Protection Plan: As a reminder, the developer is to submit a drawing to the Department of Community Development showing plans for tree protection measures to be taken during construction, and is required to adhere to the LDO in regards to Tree Protection during construction.

City of Biloxi Tree Committee

Suggested Tree Mitigation Sites

General Suggestions

- On the same site where the tree was removed, when space allows
- Sites where irrigation currently exists, or is feasible for immediate installation

Specific Locations

Streets

- Popp's Ferry Road from the nearest cross street to the Dog Park eastwards
- Howard Ave./Downtown restoration project (Ward 2)

Community Centers & Sports Complexes

- Holloway Sports complex
- Margaret Sherry Soccer Fields

Parks

- Popp's Ferry Road Dog Park
- Edgewater Park on Edgewater Drive
- Hiller Park
- Barhonovich Park at Porter Avenue (Ward 1)
- Savarro Park on Irish Hill
- Rosetti Park on Crawford Street
- City Park on Kensington Drive
- Henry Beck Park (Ward 2)

Schools – *With students helping to nurture through establishment period.*

- Biloxi High School
- Biloxi Junior High School
- Biloxi Upper Elementary
- Gorenflo Elementary
- Jeff Davis Elementary
- Nichols Elementary
- North Bay Elementary
- Popp's Ferry Elementary

Other Public Spaces

- Biloxi Cemetery
- Property just east of the Ohr Museum on Hwy 90 (Ward 1)
- Biloxi Town Green (Ward 2)
- Mardi Gras Museum Property (Ward 2)
- Tree wells on Howard Ave in front of the Library

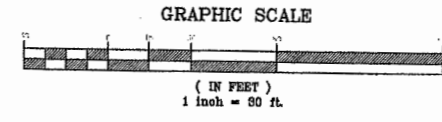
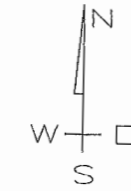
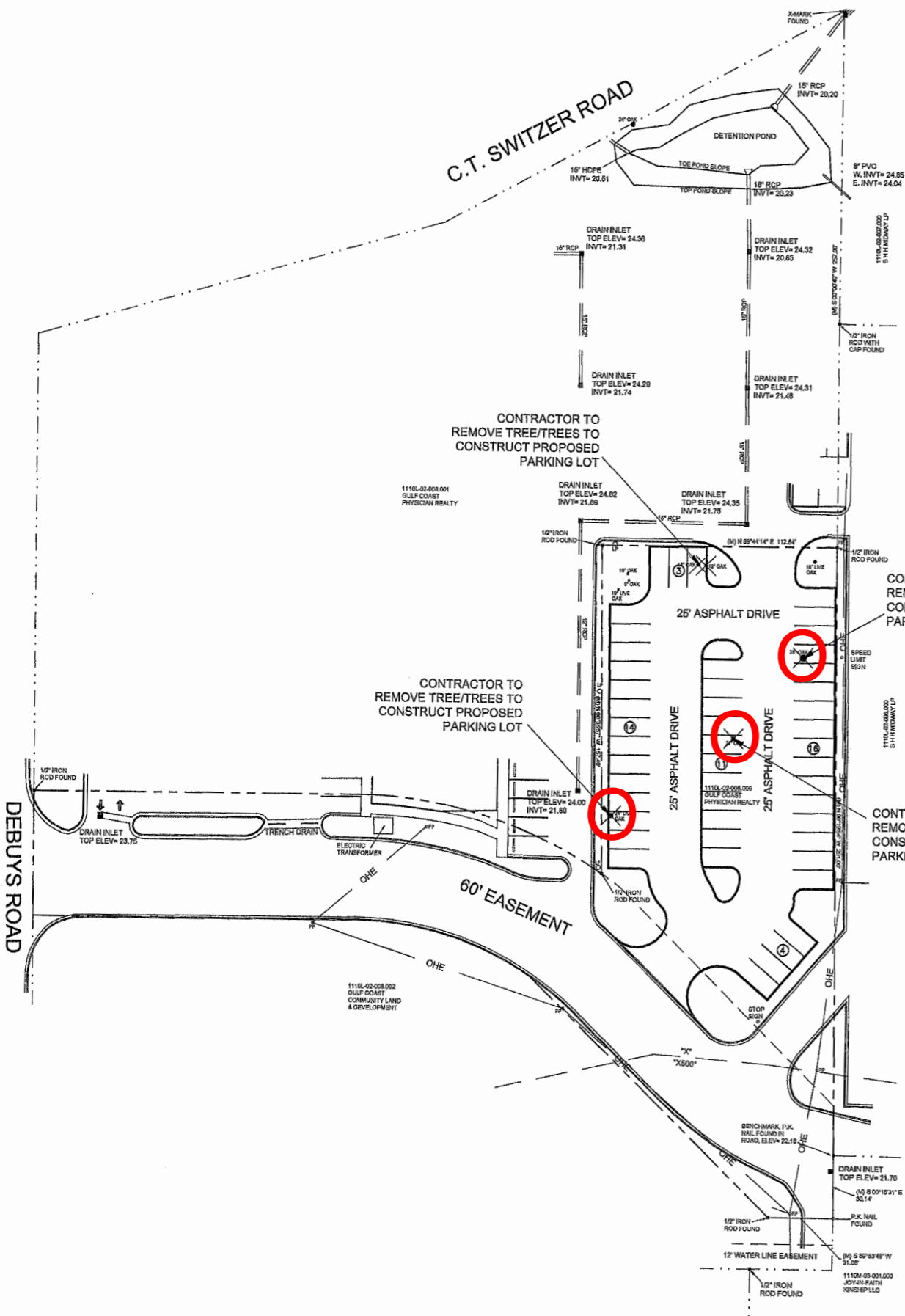


TERRY MORAN
ENGINEERING

P.O. BOX 4075
BILOXI, MS 39535

PH 228.898.4733
FAX 228.898.8788

TERRY MORAN,
P.E., P.L.S



LEGEND

- DENOTES LIMITS OF COMPLETE CLEARING AND GRUBBING OF ALL VEGETATION.
- DENOTES LIMITS OF COMPLETE CLEARING OF ALL VEGETATION
- TREE DEMO

TREE DATA TABLE

NUMBER OF EXISTING TREES - 9
 TREES TO BE REMOVED - 5
 1 - 18" OAK
 1 - 12" OAK
 1 - 22" OAK
 1 - 36" OAK
 1 - 24" LIVE OAK
 TREES TO REMAIN - 4

In Association With

FA FOUNTAIN & ASSOCIATES
 CIVIL AND COMMERCIAL DESIGN
 1822 15th Street, Ste. 12
 Gulfport, MS 39501
 228-861-5209

Date 09-25-2021
 Drawn By F.O.F.
 Check By T.J.M.
 REV _____

PROPOSED OVERFLOW PARKING LOT
 GULF COAST PROFESSIONAL TOWER
 2781 CT SWITZER DRIVE
 BILOXI, MS

TREE REMOVAL PLAN

SCALE: 1" = 30'-0"

