

MEMORANDUM

Date: September 2, 2021

To: Mayor Andrew Gilich
City Council Members
Mike Leonard, CAO
Jerry Creel, Director of Community Development
Eric Nolan, Arborist

From: City of Biloxi Tree Committee Tracy Wyman, Chair (Ex-officio); Robin Lang (1); Shirley Robinson (2); Matt Dubaz (3); Susan Peterson (4); Carroll Campbell, Vice -Chair (5); Christine Davis (6); Pamela Barlow (7)

Re: Bertucci Park Subdivision

The Bertucci Park Subdivision and subsequent owner proposes to remove a total of 122 of 510 protected trees for phase 1 of the development as follows:

Live Oaks	54
Other Oaks	56
Magnolia	10
<u>Sycamore</u>	<u>2</u>
	122

The Biloxi Tree Committee has reviewed this application and visited the site with the City Arborist, and provides the following recommendations:

1. The Tree Committee agrees with the majority of the removals to allow for the roadway, and acknowledges that considerable effort seems to have been made to remove the fewest number of trees and to situate the plats to prevent the fewest number of removals once homes are built.
2. However, the Tree Committee does respectfully recommend that reconsideration be given to the roadway at the northern most point of the property, to prevent the removal of 4 Live Oaks, sized 32", 28", 24" and 18". We recognize there are challenges of saving the trees at this point, but ask that every effort is made to do so.
3. Mitigation: Whatever the final determination by the Planning Commission, the Tree Committee recommends full mitigation for protected trees as required by the LDO at a ratio of 3:1.
4. Mitigation Species: The Tree Committee advises replanting/mitigation with live oaks (*Quercus virginiana*), bald cypresses (*Taxodium disticum*), and magnolia (*Magnolia grandiflora*) wherever feasible, since these are protected, sizeable, and native species.

When not feasible to replant with these species, native species should be used as part of mitigation. A recommended list of species for mitigation/replanting is attached.

5. Mitigation Location: The developer is encouraged to plant as many mitigation trees on-site as possible, for example:
 - Around detention area as additional stormwater mitigation;
 - Street Trees to line residential roads and provide shade, sound buffer, and enhance aesthetics for residents;
 - Trees to create a buffer between adjacent properties within the subdivision, and also between the development and adjacent properties and roadways;
 - Trees surrounding any storm water detention areas, aiding in the absorption of stormwater runoff. Where on-site mitigation is not feasible, off-site mitigation must occur in cooperation with the City Arborist.

When mitigation on-site is not possible, please refer to the attached list of potential mitigation sites.

6. Tree Protection Plan: As a reminder, the developer is to submit a drawing to the Department of Community Development showing plans for tree protection measures to be taken during construction, and is required to adhere to the LDO in regards to Tree Protection during construction.

City of Biloxi Tree Committee

Suggested Native Trees for Replanting/Mitigation (organized by size and growth cycle)

Information on preferred light, soils, habit, fruit/flowering, and drainage for each species is available at https://extension.msstate.edu/sites/default/files/publications/publications/p2330_0.pdf

LARGE TREES (Over 40' ht)

Deciduous

Acer rubrum var. *drummondii* Sargent
Acer rubrum Linnaeus
Carya glabra
Celtis laevigata
Fraxinus americana
Liquidambar styraciflua
Liriodendron tulipifera
Magnolia virginiana
Plantanus occidentalis
Prunus serotina Ehrhart
Quercus alba Linnaeus
Quercus falcata var. *pagodifolia* Elliott
Quercus michauxii Nuttall
Quercus nuttallii Palmer
Quercus shumardii
Quercus phellos Linnaeus
Nyssa sylvatica Marshall var. *sylvatica*
Nyssa sylvatica var. *biflora* Sargent
Taxodium ascendens
Taxodium distichum
Ulmus alata
Ulmus crassifolia Nuttall

Swamp Red Maple
Red Maple
Pignut Hickory
Sugarberry
White Ash
Sweetgum
Tulip Tree
Sweetbay
Sycamore
Black Cherry
White Oak
Cherrybark Oak
Swamp Chestnut Oak
Nattall Oak
Shumard Oak
Willow Oak
Tupelo Gum
Black Gum
Pond Cypress
Bald Cypress
Winged Elm
Cedar Elm

Protected by City of Biloxi

Evergreen

Magnolia grandiflora
Pinus glabra
Pinus palustris Miller
Quercus virginiana

Southern Magnolia
Spruce Pine
Long Leaf Pine
Live Oak

Protected by City of Biloxi

Protected by City of Biloxi

MEDIUM TREES (20-40' ht)

Deciduous

Acer saccharum floridanum
Betula nigra,
Carpinus caroliniana Walter
Cornus alternifolia Linne
Cornus strica Lamarack
Crataegus marshallii Eggleston
Crataegus opaca Hooker and Arnott
Cyrilla racemiflora Linnaeus
Diospyros virginiana
Halesia diptera Ellis
Ilex decidua Walter
Malus angustifolia Michaux
Rhus coppalina Linnaeus

Florida Maple
River Birch
Ironwood
Pagoda Dogwood
Swamp Dogwood
Parsley Hawthorne
Mayhaw
Titi
Native Persimmon
Silverbell
Deciduous Holly
Southern Crabapple
Winged Sumac

Evergreen

Ilex opaca Aiton

American Holly

Ilex vomitoria Aiton

Yaupon Holly

Prunus caroliniana Ehrhart

Cherry Laurel

SMALL TREES (under 20' ht)

Deciduous

Aesculus pavia

Red Buckeye

Amorpha fruticosa Linnaeus

Indigo Bush

Euonymus atropurpureus Jacq.

Burning Bush

Forestiera acuminata Poir

Swamp Privet

Hydrangea quercifolia Bartr

Oakleaf Hydrangea

Vaccinium arboreum

Sparkleberry

Chionanthus virginicus

Fringe Tree

Evergreen

Baccharis hamifolia

Groundsel Tree

Myrica cerifera

Wax Myrtle

This list is not comprehensive. References should be consulted for a comprehensive list and information regarding height, form, spacing, soil, drainage and light requirements.

References:

https://extension.msstate.edu/sites/default/files/publications/publications/p2330_0.pdf

http://www.fwrc.msstate.edu/pubs/ms_trees.pdf

City of Biloxi Tree Committee

Suggested Tree Mitigation Sites

General Suggestions

- On the same site where the tree was removed, when space allows
- Sites where irrigation currently exists, or is feasible for immediate installation

Specific Locations

Streets

- Popp's Ferry Road from the nearest cross street to the Dog Park eastwards
- Howard Ave./Downtown restoration project (Ward 2)

Community Centers & Sports Complexes

- Holloway Sports complex
- Margaret Sherry Soccer Fields

Parks

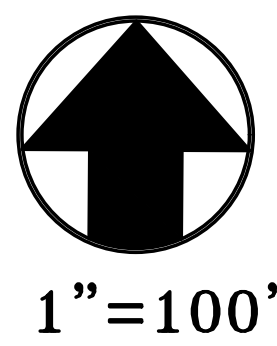
- Popp's Ferry Road Dog Park
- Edgewater Park on Edgewater Drive
- Hiller Park
- Barhonovich Park at Porter Avenue (Ward 1)
- Savarro Park on Irish Hill
- Rosetti Park on Crawford Street
- City Park on Kensington Drive
- Henry Beck Park (Ward 2)

Schools – *With students helping to nurture through establishment period.*

- Biloxi High School
- Biloxi Junior High School
- Biloxi Upper Elementary
- Gorenflo Elementary
- Jeff Davis Elementary
- Nichols Elementary
- North Bay Elementary
- Popp's Ferry Elementary

Other Public Spaces

- Biloxi Cemetery
- Property just east of the Ohr Museum on Hwy 90 (Ward 1)
- Biloxi Town Green (Ward 2)
- Mardi Gras Museum Property (Ward 2)
- Tree wells on Howard Ave in front of the Library

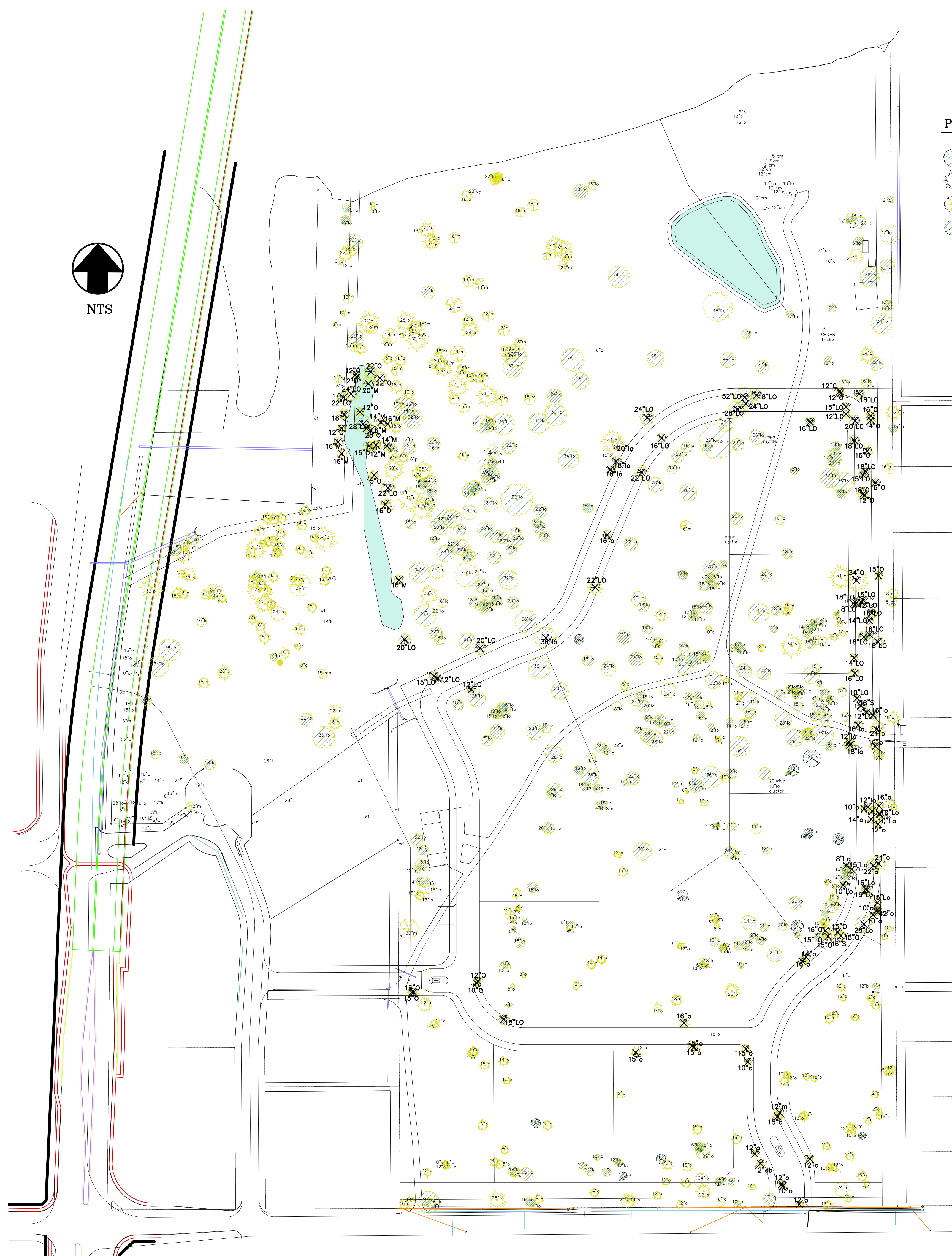


THIS PROPERTY IS LOCATED IN F.I.R.M. ZONE AS SHOWN HEREON ACCORDING TO MAP NUMBER 28047C0286g DATED JUNE 16, 2009

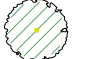



Min. Lot Size - 35,000 s.f.
Total Lots = 14

Setbacks:
FYSB=30'
SYSB=10'
RYSB=20'

REVISIONS	
DRAWN	CH
CHECKED	
DATE	February 2009
SHEET TITLE	Lot and Street Layout
PROJECT NAME	Bertucci Park City of Biloxi, Mississippi
PROJECT NO.	13061 Shriners Blvd, Suite C Biloxi, Mississippi 39532 Office (228) 392-1638 Fax (228) 392-1679
CONSULTING ENGINEERS	Dennis Stieffel and Associates, Inc. Consulting Engineers
SHEET	3
PROJECT NO.	739







Phase 1 Protected Trees

-  Live Oaks - 299
-  Oaks - 194
-  Magnolia - 6
-  Sycamore - 11

Total - 510

To Be Removed

-  54
-  56
-  10
-  2

Total 122