

## MEMORANDUM

To: Mayor Andrew Gilich  
City Council Members  
Mike Leonard, CAO  
Jerry Creel, Director of Community Development  
Eric Nolan, Arborist

From: City of Biloxi Tree Committee  
Tracy Wyman, Chair (Ex-officio)  
Carroll Campbell, Vice -Chair (5)  
Matt Dubaz (3)  
Shirley Robinson (2)  
Robin Rodolfich (1)  
Christine Davis (6)  
Susan Peterson (4)  
Pamela Barlow (7)

Date: June 17, 2021

**Re: Case No. TR-21-003–The Preserve at Parker’s Creek**

Owner Scratch Golf, LLC and applicant Elliott Land Development, LLC propose to remove a total of fifty-eight (58) trees, including two (2) Live Oaks, fifty-five (55) Water Oaks, and one (1) Sweet Gum tree for a proposed development, The Preserve at Parker's Creek. The Biloxi Tree Committee has reviewed this application and visited the site with the City Arborist, and provides the following recommendations:

Tree Committee recommends approval of this permit application. Mitigation for protected trees is required at a ratio of 3:1. Tree Committee advises replanting with live oaks (*Quercus virginiana*), bald cypresses (*Taxodium disticum*), and magnolia (*Magnolia grandiflora*) wherever feasible, as these species provide the greatest longevity and ecosystem services for Biloxians, and are thus the best investment.

When not feasible to replant with these species, native species should be used as part of mitigation. Biloxi’s Recommended Tree List, attached, provides ample native species suitable for planting in our City. The developer is encouraged to plant as many mitigation trees on-site as possible, for example:

- Street Trees to line residential roads and provide shade, sound buffer, and enhance aesthetics for residents;
- Trees to create a buffer between adjacent properties within the subdivision, and also between the development and Shriners Boulevard;

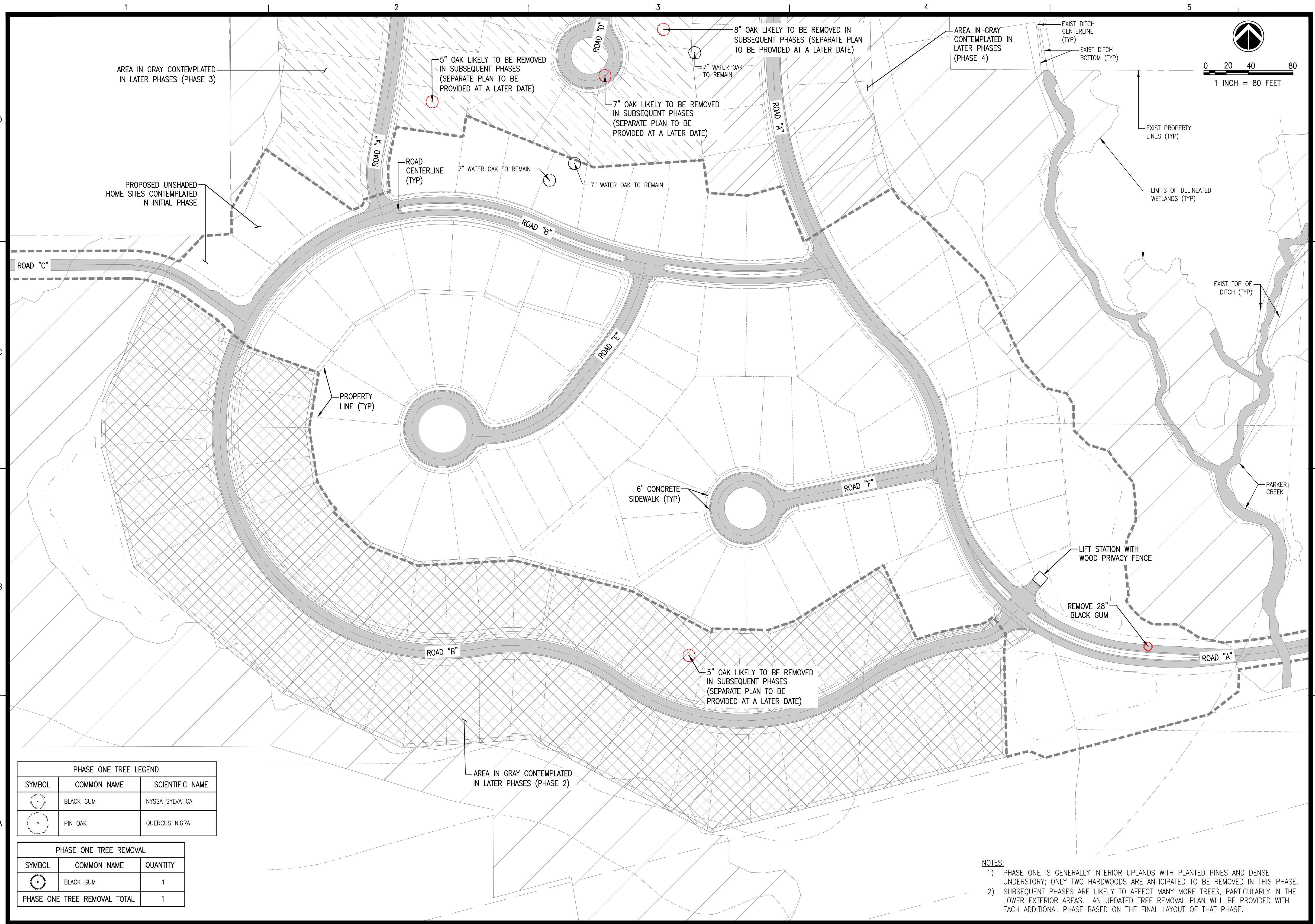
- Trees surrounding any storm water detention areas, aiding in the absorption of stormwater runoff.

Where on-site mitigation is not feasible, off-site mitigation must occur in cooperation with the City Arborist. A list of potential mitigation sites is attached.

The developer must submit a detail to the Department of Community Development showing plans for tree protection measures during construction.


As the project goes forward, Tree Committee advises application of Sustainable Development Incentives as outlined in the Land Development Ordinance, in addition to low impact development stormwater principles, which may save the developer money.





REVISIONS:


PROJECT #: 25705.05  
 DATE: MAY 2021  
 DRAWN BY: MLS  
 DESIGNER: CBW  
 CHECKED BY: CBW



**Pickering**  
 Pickering Firm, Inc.  
 Transportation • Environmental • Water Resources  
 Civil • Facilities  
 126 Rue Magnolia  
 Biloxi, MS 39530  
 228.432.9925

**THE PRESERVE AT PARKER CREEK  
 PHASE ONE - PRELIMINARY PLAT  
 SHRINERS BLVD  
 BILOXI, HARRISON COUNTY, MS**

SEAL:  
**PRELIMINARY - NOT  
 FOR CONSTRUCTION**

SHEET NUMBER:  
**C1.5**  
 DESCRIPTION:  
 TREE PLAN PHASE I

PHASE ONE TREE LEGEND

SYMBOL	COMMON NAME	SCIENTIFIC NAME
	BLACK GUM	NYSSA SYLVATICA
	PIN OAK	QUERCUS NIGRA

PHASE ONE TREE REMOVAL

SYMBOL	COMMON NAME	QUANTITY
	BLACK GUM	1
PHASE ONE TREE REMOVAL TOTAL		1

NOTES:  
 1) PHASE ONE IS GENERALLY INTERIOR UPLANDS WITH PLANTED PINES AND DENSE UNDERSTORY; ONLY TWO HARDWOODS ARE ANTICIPATED TO BE REMOVED IN THIS PHASE. SUBSEQUENT PHASES ARE LIKELY TO AFFECT MANY MORE TREES, PARTICULARLY IN THE LOWER EXTERIOR AREAS. AN UPDATED TREE REMOVAL PLAN WILL BE PROVIDED WITH EACH ADDITIONAL PHASE BASED ON THE FINAL LAYOUT OF THAT PHASE.  
 2)