

MEMORANDUM

To: Mayor Andrew Gilich
Jerry Creel, Director of Community Development
Eric Nolan, Arborist
City Council Members
Mike Leonard, CAO

From: City of Biloxi Tree Committee
Carroll Campbell, Chair (5)
Beau Blalock (6)
Tracy Wyman, Secretary (3)
Matt Dubaz (2)
Robin Rodolfich (1)
Geneva Dummer (4)
Pam Barlow (7)

Date: February 20, 2020

Re: Recommendations for Big Play Go-Kart Track

The Tree Committee has reviewed the site plan and tree inventory provided by the City Arborist for Big Play Go-Kart Track on the NE corner of Veterans Blvd at Hwy 90.

A tree survey was provided by the developer showing 15 protected trees proposed for removal, identified as follows:

Species #	Protected Trees #	Trees Proposed for Removal
Live Oak	1	1
Other Oaks	13	13
Magnolia	1	1

The Committee walked the site and to examine the proposal and the opportunities to retain some of the protected trees, making the following recommendations which are illustrated in the attached Exhibit A:

1. The Committee recommends retaining and raising the canopy of the 24” water oak, annotated as Circle A on the attached Exhibit A.
2. The Committee recommends retaining and raising the canopy of the 24” Live Oak and 24” Water Oak, annotated as Circle B on the attached Exhibit A.
3. If the consideration in paragraphs 2 and 3 is not feasible, the Committee recommends the developer consider locating the track a bit further to the south to allow for retaining trees illustrated in Circle C on attached Exhibit A (1-16” Water Oak, 1-16” Red Oak, 1-20” Water Oak,

and 1-10" Magnolia). These trees represent the opportunity to create a buffer between adjacent properties and to provide shade to users of the Go-Kart Track.

4. For each protected tree that is approved for removal, replanting /mitigation is to occur at a rate of 3:1, and must occur within 6 months of the properties' receipt of the Certificate of Occupancy or Certificate of Development Compliance. The Committee makes the following mitigation recommendations:

Mitigation Species: 50% of replanting should be Live Oaks; 25% of replanting should be Southern Magnolia; and 25% of the replanting should be Bald Cypress.

The developer is encouraged to plant as many trees on-site as possible as follows:

- Street Trees to line Veterans Blvd and Hwy 90;
- Trees to create a buffer and/or between adjacent properties and 'natural areas' toward the backs of lots especially;
- Trees to create shade for users;
- Trees at key entry point to the park;
- Trees in parking islands, and to provide shaded parking;
- Trees surrounding stormwater detention.

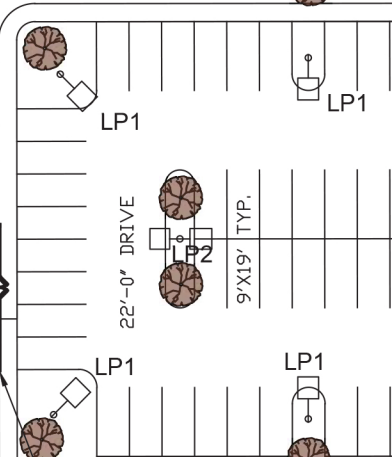
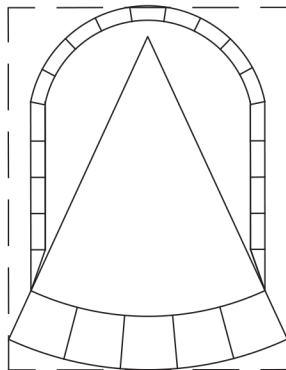
Where on-site mitigation is not feasible, off-site mitigation may occur in cooperation with the City Arborists. A list of potential mitigation sites is attached.

5. The Committee also recommends the developer utilize Sustainable Development Incentives as outlined in the Land Development Ordinance, in addition to low impact development stormwater principles which may save the developer money.

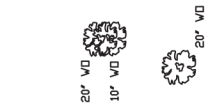
6. The demolition plan and construction details must include a statement or detail regarding tree protection during construction which includes tree protection fencing, no stock-piling or storage beneath protect trees, and which complies fully with the Land Development Ordinance.

**EXHIBIT A
SITE PLAN REFERENCE**

BATTING CAGES
5 BAY - 77'X100' ±



TICKET BOOTH,
CONCESSION,
RESTROOMS



NEW
STORAGE
BUILDING



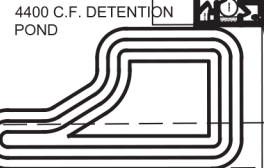
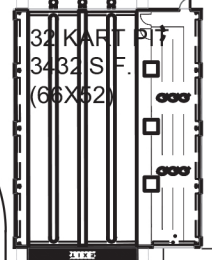
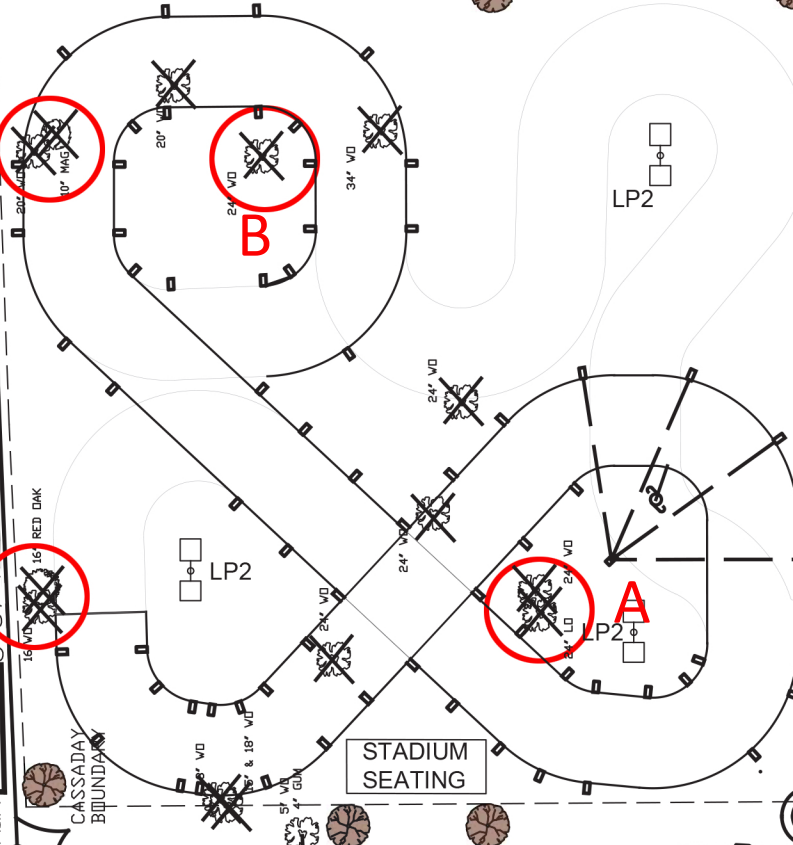
N 00°29'07" W 198.88'

F.I.P.

ASPHALT'S 67°49'47" W 214.22'

C

C



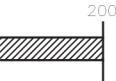
STADIUM
SEATING

4400 C.F. DETENTION
POND

B
DP 21.99
TOP INV. 16.69
V. TBD

CB
DP 20.69
TOP INV. 16.69
V. TBD

N 00°20'06" W 830.72'



WALK
NEW TREE (TYP.)

GROSS WALK

City of Biloxi Tree Committee

Suggested Tree Mitigation Sites

General Suggestions

- On the same site where the tree was removed, when space allows
- Sites where irrigation currently exists, or is feasible for immediate installation

Specific Locations

Streets

- Popp's Ferry Road from the nearest cross street to the Dog Park eastwards
- Howard Ave./Downtown restoration project (Ward 2)

Community Centers & Sports Complexes

- Holloway Sports complex
- Margaret Sherry Soccer Fields

Parks

- Popp's Ferry Road Dog Park
- Edgewater Park on Edgewater Drive
- Hiller Park
- Barhonovich Park at Porter Avenue (Ward 1)
- Savarro Park on Irish Hill
- Rosetti Park on Crawford Street
- City Park on Kensington Drive
- Henry Beck Park (Ward 2)

Schools – *With students helping to nurture through establishment period.*

- Biloxi High School
- Biloxi Junior High School
- Biloxi Upper Elementary
- Gorenflo Elementary
- Jeff Davis Elementary
- Nichols Elementary
- North Bay Elementary
- Pops Ferry Elementary

Other Public Spaces

- Biloxi Cemetery
- Property just east of the Ohr Museum on Hwy 90 (Ward 1)
- Biloxi Town Green (Ward 2)
- Mardi Gras Museum Property (Ward 2)
- Tree wells on Howard Ave in front of the Library