

Secretary of State's proposed Tidelands line (purple) in Margaritaville case.

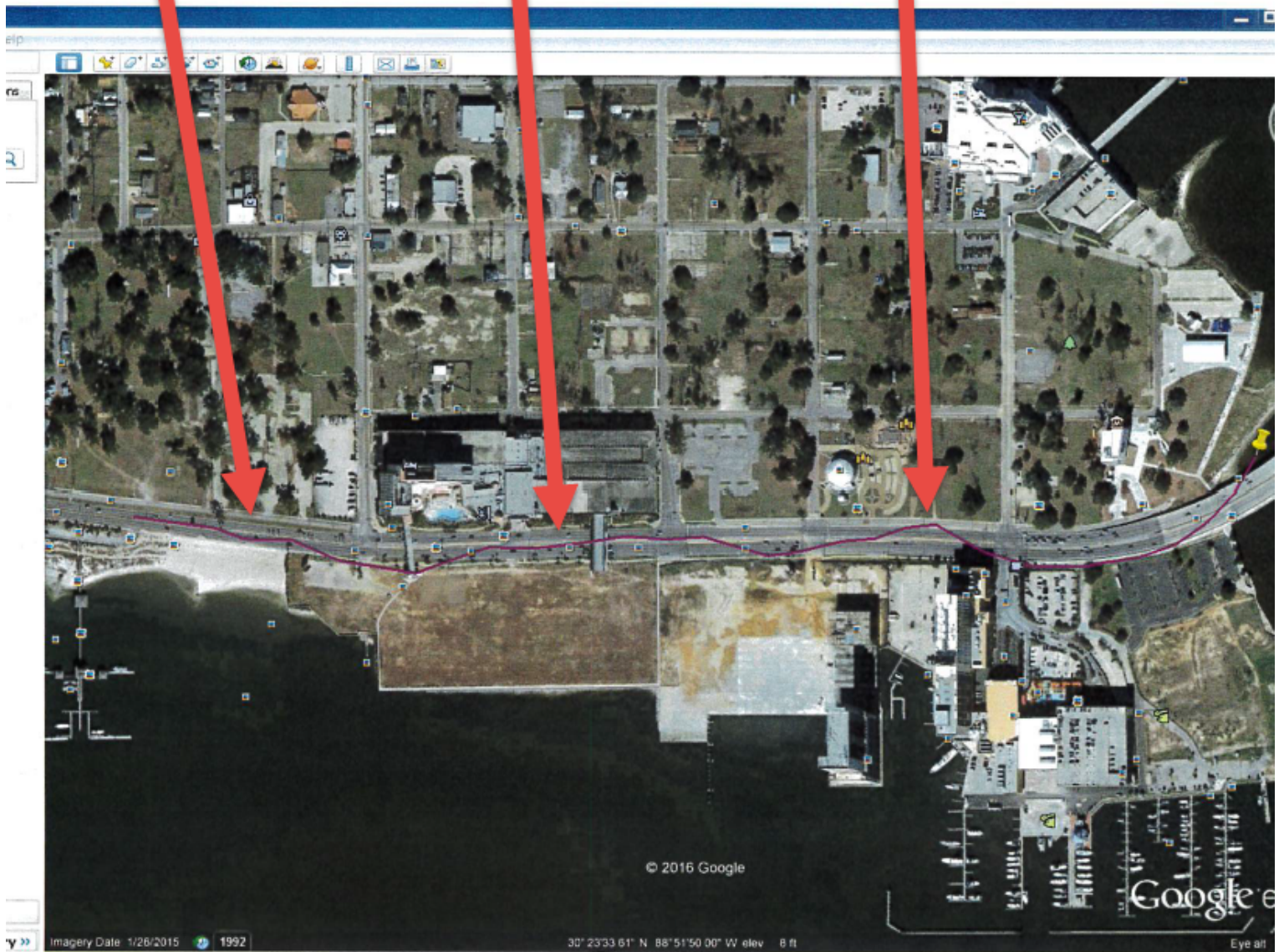


EXHIBIT
"1"



A vertical sidebar of navigation and map controls. From top to bottom: a compass icon, a circular navigation pad with four arrows, a circular navigation pad with four arrows, a small 3D terrain icon, a vertical slider control, a white location pin icon, the text 'T324', a satellite-style map view, the text 'earth', and the text '4080 ft' with a blue circular icon.