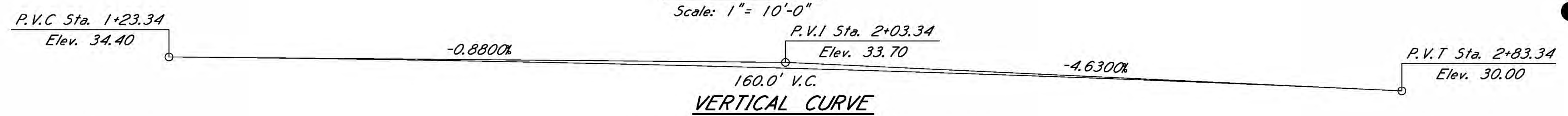
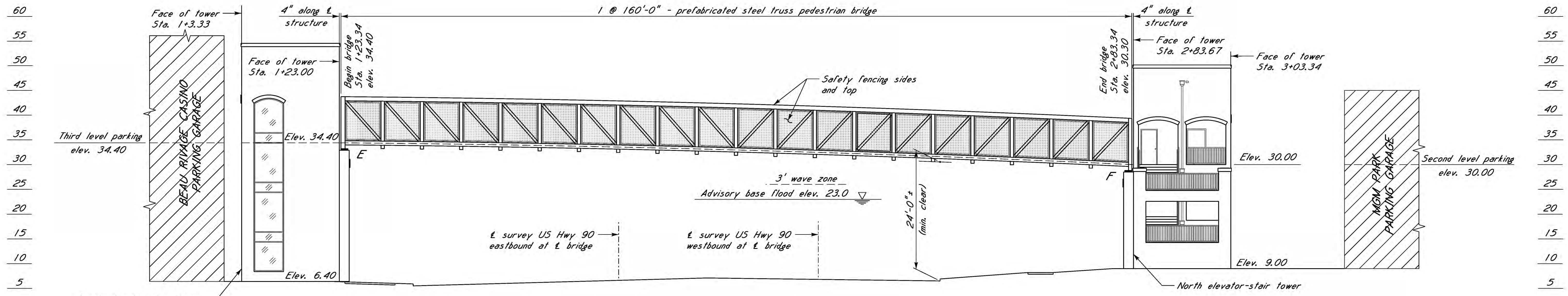


GENERAL PLAN
Scale: 1" = 10'-0"



VERTICAL CURVE



GENERAL ELEVATION ALONG & STRUCTURE
Scale: 1" = 10'-0"

NOTE: Minimum vertical clear assumes 1'-1" from top of deck to bottom of steel and no vertical camber.

NOTE:
For GENERAL NOTES, see dwg. no. GNI.

LEGEND:
F = fixed bridge bearing
E = expansion bridge bearing



BY		MISSISSIPPI DEPARTMENT OF TRANSPORTATION	
REVISIONS		PEDESTRIAN BRIDGE OVER US HWY 90	
		NEAR CAILLAVET STREET IN BILOXI, MS	
		PLAN AND ELEVATION	
		PROJECT 107192-301000	
		STP-0003-01(193)	
		HARRISON COUNTY	
		WORKING NUMBER	
		A2 OF 15	
DESIGNER Randy Boudreaux, P.E.		CHECKER Kevin J. Kennedy, P.E.	
DATE		ISSUE DATE 04/20/17	
DETAILER Randy Boudreaux, P.E.		SHEET NUMBER	
DIRECTOR OF STRUCTURES, STATE BRIDGE ENGINEER - JUSTIN WALKER, P.E.		8005	
DEP. DIRECTOR OF STRUCTURES, ASSIST. STATE BRIDGE ENGINEER - SCOTT WESTERFIELD, PE.			

FILE: S: Projects 12236.012 Hwy 90 Biloxi Pedestrian Crosswalk Drawings 12236-012-A2 Plan-Elevation.dgn
 DATE: 4/20/2017 TIME: 2:09:06 PM USER: RJB