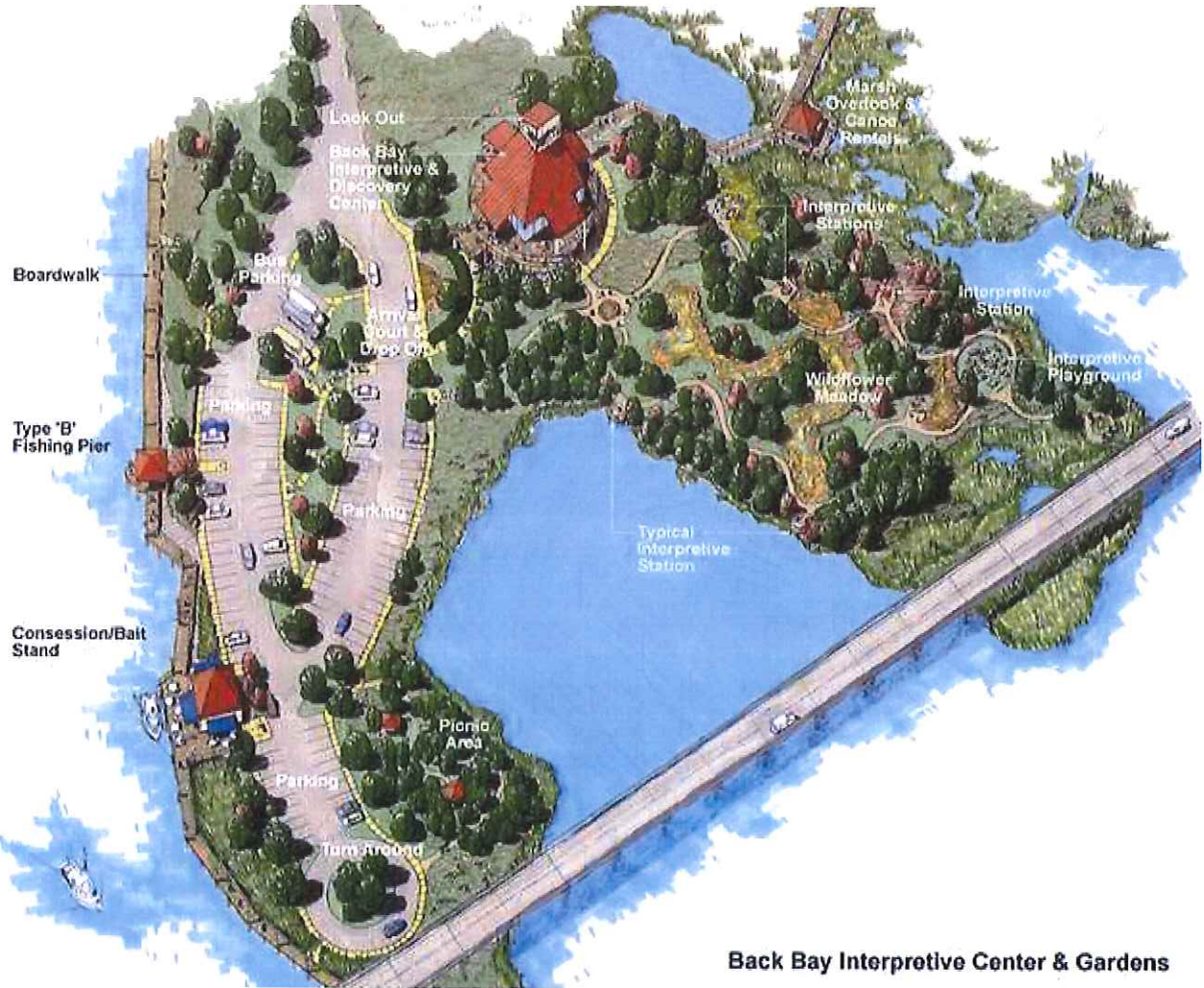


The original rendering

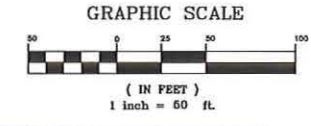


S.W.P.P. NOTES:

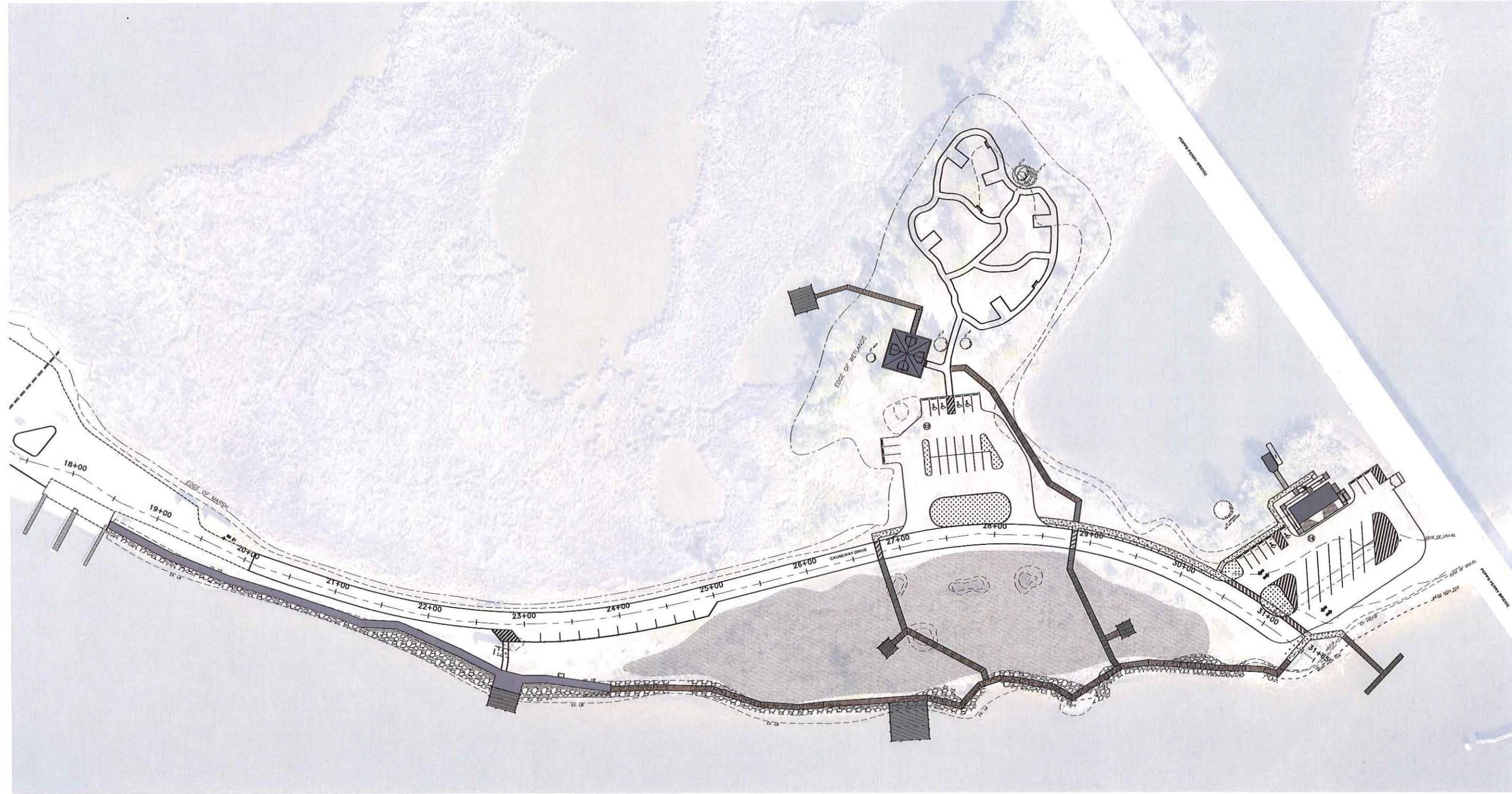
1. CONTRACTOR SHALL CONSTRUCT EROSION CONTROL MEASURES AND STORMWATER POLLUTION PREVENTION FACILITIES AS SHOWN ON CONSTRUCTION PLANS OR AS DIRECTED BY PROJECT ENGINEER, TO PROTECT ADJACENT PROPERTIES AND WATER RESOURCES FROM EROSION AND SEDIMENTATION.
2. ALL EROSION AND SEDIMENTATION CONTROL MEASURES MUST BE MAINTAINED AT ALL TIMES AND ADHERE TO THE STANDARDS AND SPECIFICATIONS OF THE MISSISSIPPI "DRAWING AND DESIGN MANUAL FOR THE CONTROL OF EROSION, SEDIMENT, & STORMWATER."
3. SEE STORMWATER POLLUTION PREVENTION NOTES ON SHEET G1 FOR MORE INFO.
4. THIS PROPERTY IS SITUATED IN ZONE "AE" (BFE 16.0) PER FEMA FLOOD INSURANCE RATE MAP, HARRISON COUNTY, MISSISSIPPI, COMMUNITY PANEL NUMBER 288 of 575, MAP NUMBER 28047C0286G, EFFECTIVE: 6/16/09, BY GRAPHIC C PLOTTING ONLY.

CONTRACTOR SHALL USE
EXTREME CAUTION
AT ALL TIMES
DUE TO UNDERGROUND UTILITIES

BM	DESCRIPTION	BM	DESCRIPTION
1	C.M.F. w/BRASS CAP N: 334277.126 E: 938552.887 EL: 4.32 (NAD83)	2	C.M.F. w/BRASS CAP N: 336977.984 E: 938749.763 EL: 9.90 (NAD83)



Overview



Revised	
Drawn	K. NETTO
Checked	J. DIAZ
Approved	M. SEYMOUR
Date	10/19/2016

Sheet Title
**PROPOSED STORMWATER
POLLUTION PREVENTION PLAN
(S.W.P.P.)**

Project Name
**POPPS FERRY CAUSEWAY PARK
CITY OF BILOXI
HARRISON COUNTY, MISSISSIPPI**

SEYMOUR ENGINEERING
PHONE: 228-385-2350 FAX: 228-385-2353
925 TOMMY MUNRO DRIVE, SUITE G
BILOXI, MISSISSIPPI 39532



PROPOSED STORMWATER POLLUTION PREVENTION PLAN (S.W.P.P.)

SCALE: 1" = 50'

Sheet
C7

Project No.
15-027

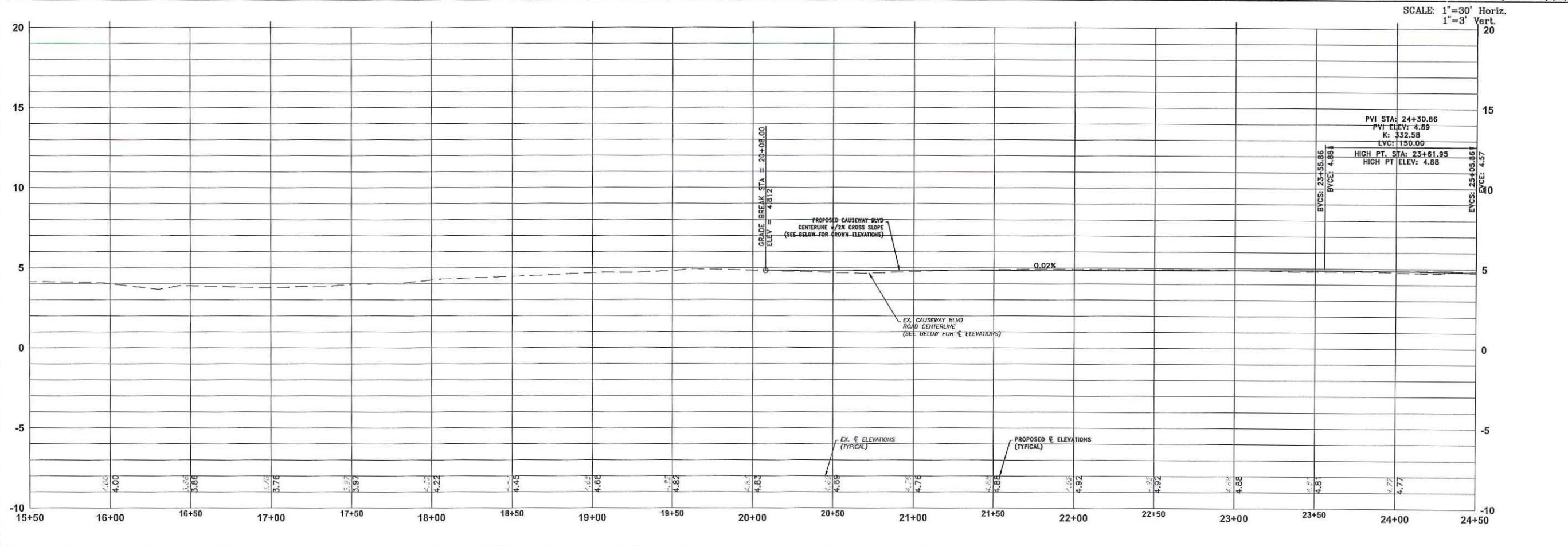
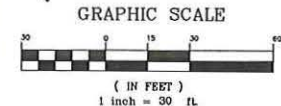
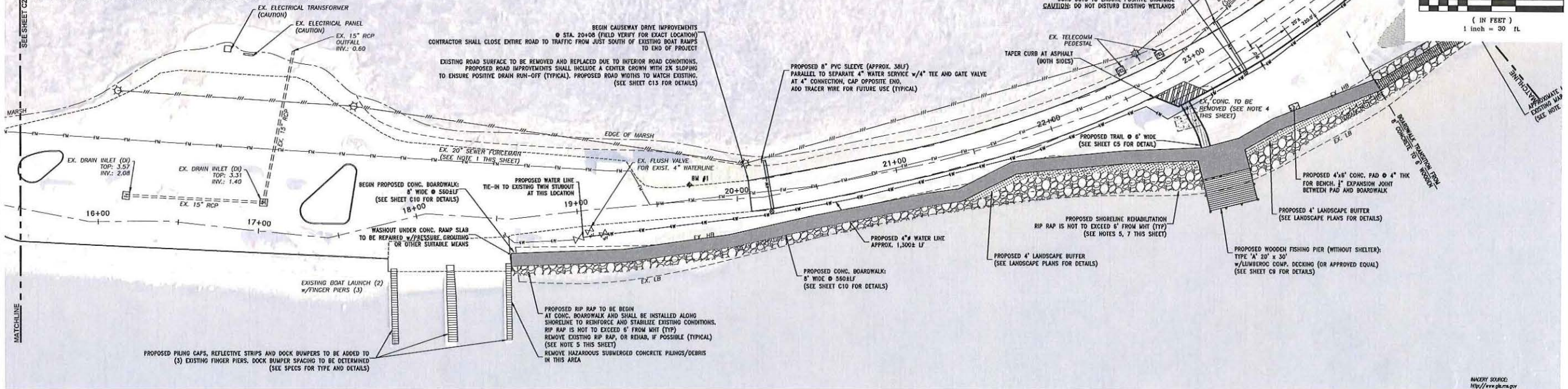
AIRCRAFT SOURCE:
http://www.globe.gov
Sevill Company
Remote-Sensing Coastal Aerial Image (2012)

GENERAL NOTES:

- EXISTING 20'0" FORCE MAIN LOCATION SHOWN ON PLANS IS APPROXIMATE. SEE SANITARY SEWER NOTE 9 ON SHEET G1 FOR MORE INFO.
- SEE ELECTRICAL PLANS FOR ALL LIGHTING AND ELECTRICAL INFORMATION AND DETAILS.
- SEE LANDSCAPE PLANS FOR ALL LANDSCAPING INFORMATION AND DETAILS.
- EXISTING CONCRETE ISLAND TO BE REMOVED. THE EXISTING SURVEY MONUMENT FOUND IS TO BE TURNED OVER TO THE ENGINEER. A NEW MONUMENT SHALL BE INSTALLED AT THE REQUEST OF THE CITY OF BILOXI, COORDINATE ACTUAL LOCATION AND DETAILED INFORMATION WITH THE CITY OF BILOXI.
- CONTRACTOR SHALL REMOVE CONCRETE DEBRIS AND NON-RIP RAP PRIOR TO INSTALLATION AND REHABILITATION OF EXISTING RIP RAP ALONG SHORELINE (TYPICAL). ALL RIP RAP SHALL BE 200# STONE WITH A 12" MINIMUM THICKNESS. SEE SHORELINE STABILIZATION NOTES ON SHEET G1 FOR ADDITIONAL INFORMATION.
- ALL PROPOSED FACILITIES, SIDEWALKS AND WALKWAYS ARE TO BE DESIGNED AND CONSTRUCTED TO BE ADA COMPLIANT.
- NO RIP RAP SHALL BE PLACED IN EMERGENT VEGETATION, MARSH GRASS OR POCKET BEACH AREAS. PROPOSED SHORELINE STABILIZATION SHALL AVOID TO THE MAXIMUM EXTENT PRACTICABLE MARSH GRASSES AND POCKET BEACH AREAS. FIELD VERIFY AND RELOCATE WOODEN BOARDWALK, IF NECESSARY. SEE SHORELINE STABILIZATION NOTES ON SHEET G1 FOR ADDITIONAL INFORMATION.

CONTRACTOR SHALL USE EXTREME CAUTION AT ALL TIMES DUE TO UNDERGROUND UTILITIES

BM	DESCRIPTION	BM	DESCRIPTION
1	C.M.F. w/BRASS CAP N: 334277.126 E: 938552.887 EL: 4.32 (NAD88)	2	C.M.F. w/BRASS CAP N: 336977.984 E: 938749.763 EL: 9.90 (NAD88)



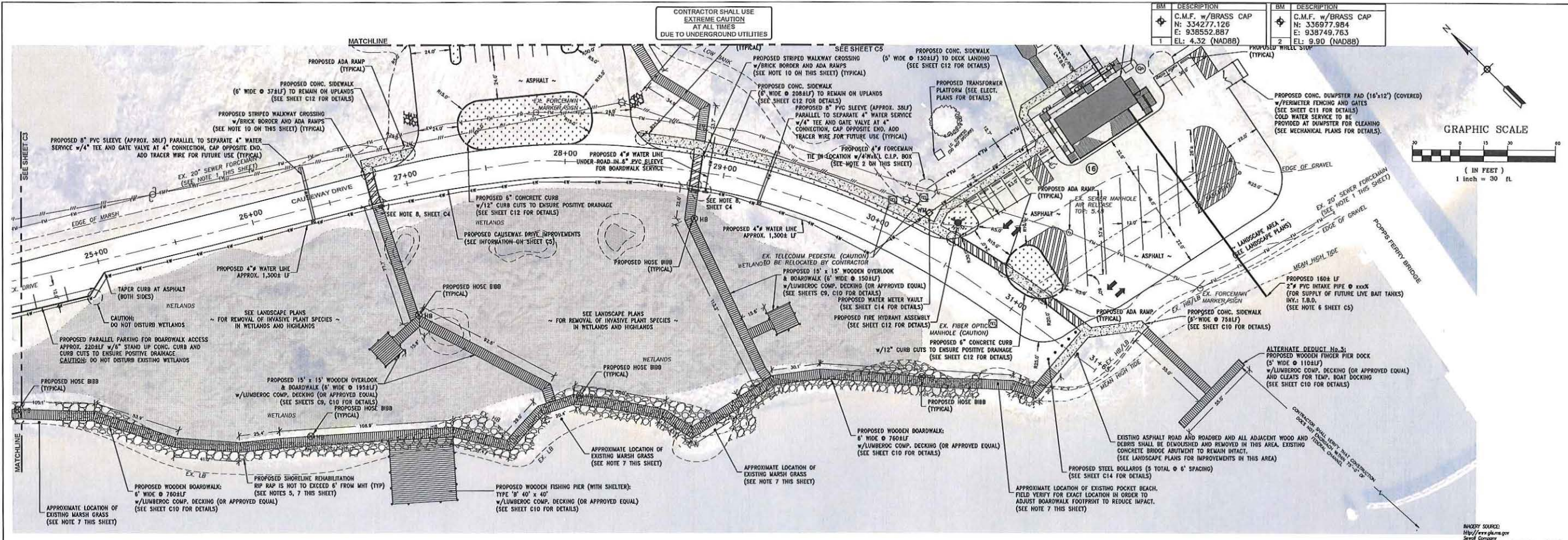
Revised	
Drawn	K. HETTO
Checked	J. OAK
Approved	M. SEYMOUR
Date	10/19/2016

Sheet Title
PROPOSED IMPROVEMENTS - PLAN AND PROFILE
 STA. 15+50 - STA. 24+50

Project Name
POPPS FERRY CAUSEWAY PARK
 CITY OF BILOXI
 HARRISON COUNTY, MISSISSIPPI

SEYMOUR ENGINEERING
 925 TOMMY MUNRO DRIVE, SUITE G
 BILOXI, MISSISSIPPI 39532
 PHONE: 228-385-2350 FAX: 228-385-2353

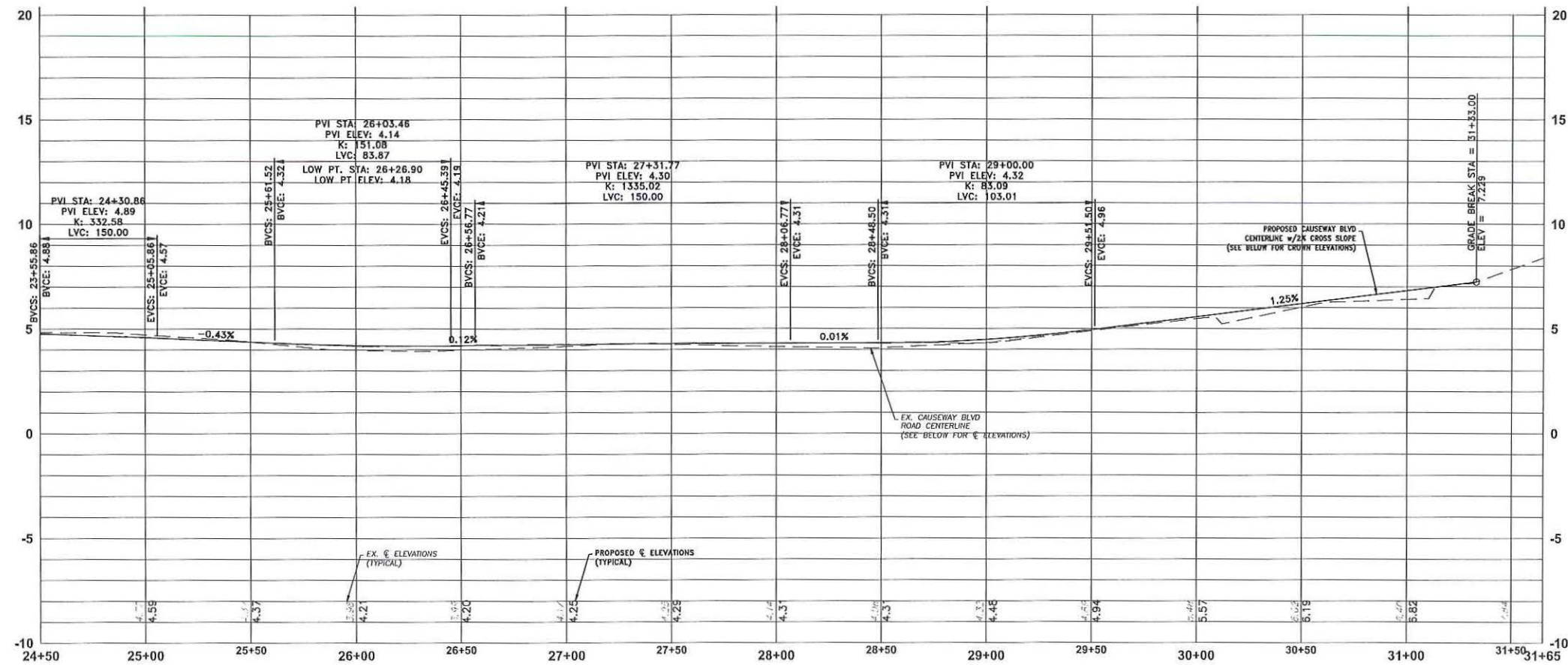
Sheet
C3
 Project No.
 15-027



Revised	
Drawn	K. NETO
Checked	J. DIAZ
Approved	M. SEYMOUR
Date	10/19/2018

Sheet Title
PROPOSED IMPROVEMENTS - PLAN AND PROFILE
 STA. 24+50 - STA. 31+65/EOP

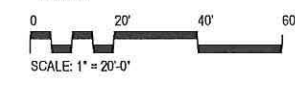
Project Name
POPPS FERRY CAUSEWAY PARK
 CITY OF BILOXI
 HARRISON COUNTY, MISSISSIPPI



SEYMOUR ENGINEERING
 925 TOMMY MUNRO DRIVE, SUITE G
 BILOXI, MISSISSIPPI 39532
 PHONE: 228-385-2350 FAX: 228-385-2353

Sheet
C4
 Project No.
 15-027

Perez.



Revised	
Drawn	B. Adams
Checked	
Approved	
Date	10/20/2018

PLANTING PLAN

Sheet Title

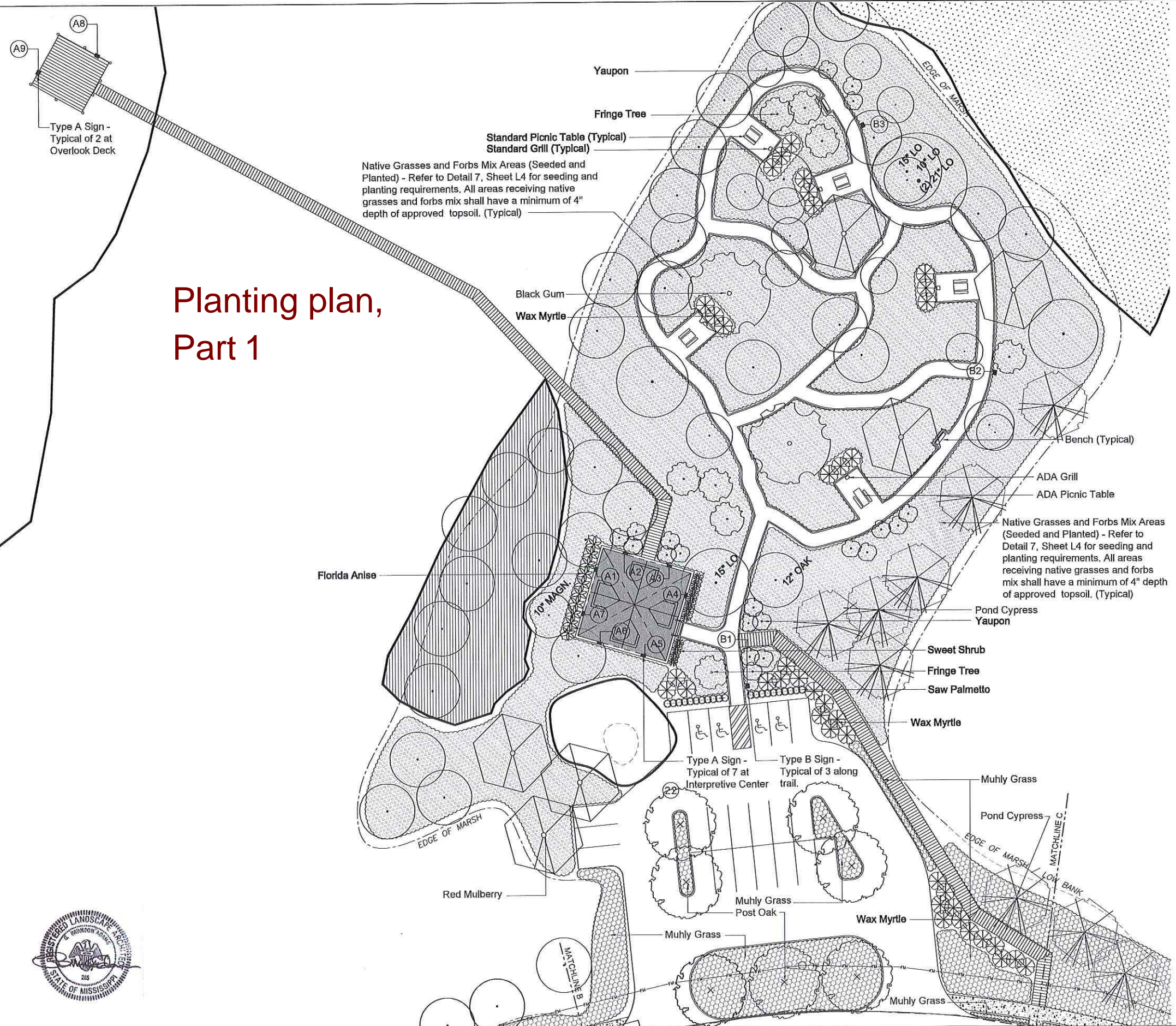
Project Name
POPPS FERRY CAUSEWAY PARK
 CITY OF BILOXI
 HARRISON COUNTY, MISSISSIPPI

SEYMOUR ENGINEERING
 925 TOMMY MUNRO DRIVE, SUITE G
 BILOXI, MISSISSIPPI 39532
 PHONE: 228-365-2350
 FAX: 228-365-2353

Sheet
L2

Project No.
 15-027

Planting plan, Part 1



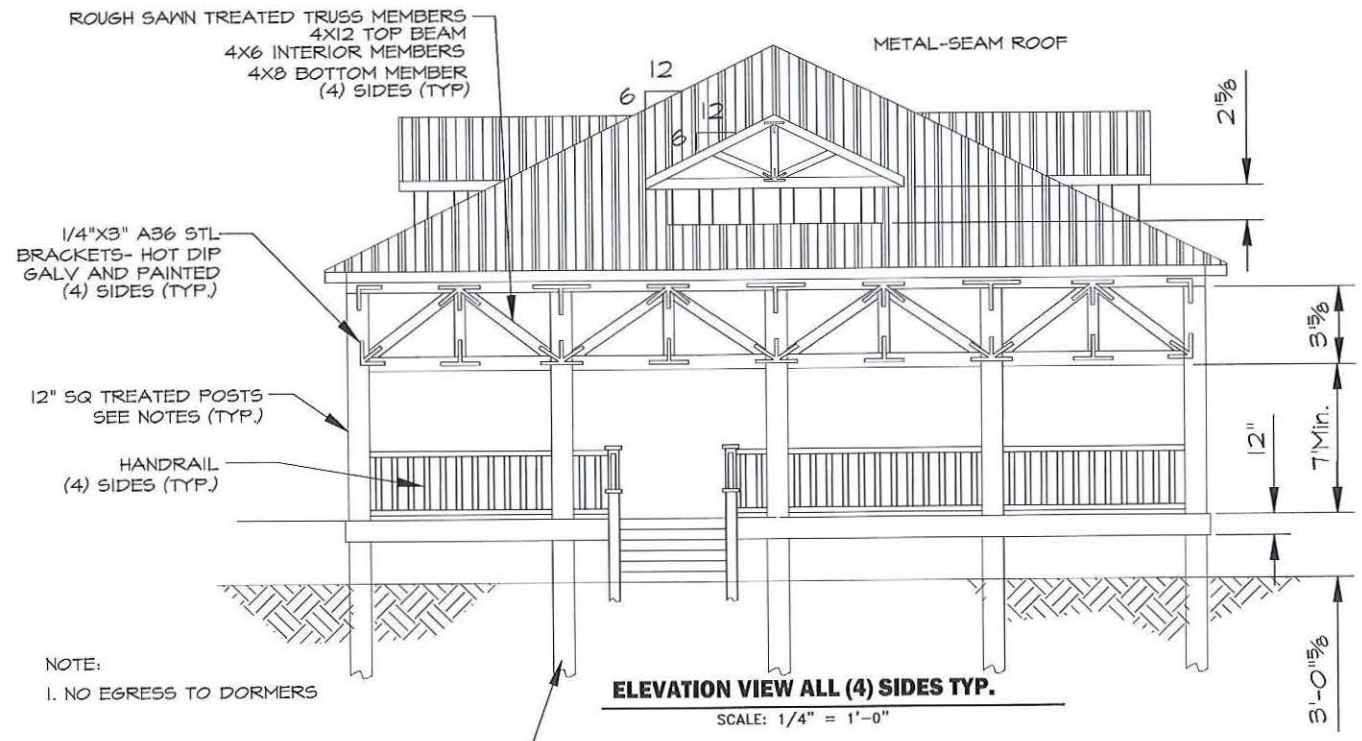
Legend

- Existing tree- Location shown is approximate. Verify number of trees and locations in the field.
- Black Gum
- Post Oak
- Southern Magnolia
- Red Mulberry
- Pond Cypress
- Fringe Tree
- Yaupon
- Wax Myrtle
- Florida Anise
- Sweet Shrub
- Saw Palmetto
- Muhly Grass
- Native Grasses and Forbs Mix (See Detail 7, Sheet L-4)
- Sign Number



Revised	
Drawn	G.A.
Checked	J. DIAZ
Approved	M. SEYMOUR
Date	10/19/2016

Open-air interpretive center



FIN. FL. EL.=10'-0" (VERIFY)
 GRADE EL.=7'-0" (VERIFY)

NOTE:
 1. NO EGRESS TO DORMERS

12" ROUND TREATED TIMBER PILES
 SEE NOTES (TYP.)

ELEVATION VIEW ALL (4) SIDES TYP.
 SCALE: 1/4" = 1'-0"

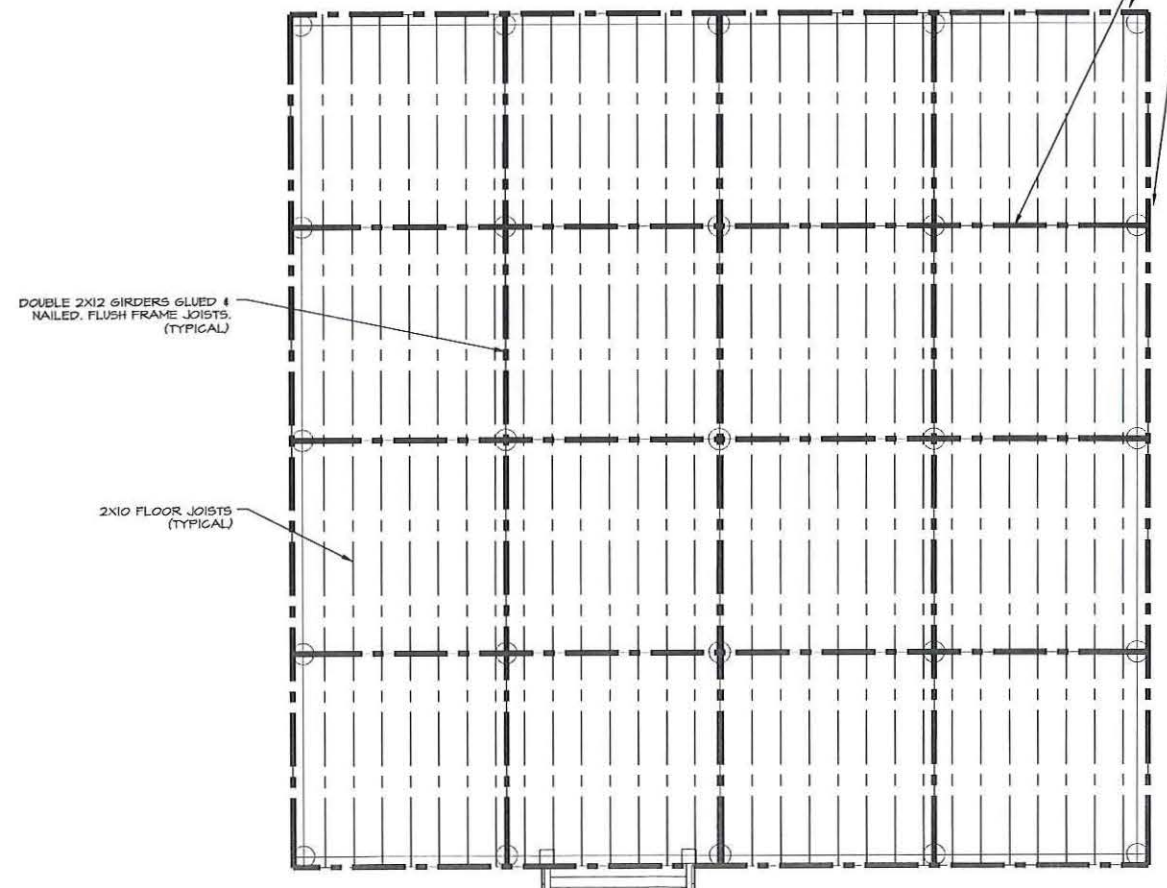
HURRICANE ANCHORS AND STRAPS TO BE INSTALLED ALL ROOF TRUSS TO WALL AND WALL TO FLOOR SYSTEM, WALL TO JOIST LEDGER AND JOIST LEDGER TO BEAM CONNECTIONS (TYP)

ROUGH SAWN TREATED TIMBER TRUSS MEMBERS SHOWN ABOVE SHALL BE CONNECTED USING 3/4" DIAM. A307 BOLTS AND NUTS WITH OVERSIZED WASHERS ON BACKSIDE OF MEMBERS (BOLTS, NUTS, AND WASHERS SHALL BE HOT DIP GALV AND PAINTED TO MATCH BRACKETS AT EXTERIOR)

12" SQ. POSTS SHALL BE TIED TO FLOOR AND 12" ROUND PILES WITH 1/4" STL STRAPS OR HIGH STRENGTH HURRICANE STRAPS STRAPS SHALL BE HD GALV. AND PAINTED TO MATCH WHERE EXPOSED TO VIEW

HARDI-BOARD CEILING W/BACKING, IF REQUIRED.

TRIPLE 2X12 GIRDERS GLUED & NAILED, FLUSH FRAME JOISTS. (TYPICAL)



FLOOR FRAMING PLAN
 SCALE: 1/4" = 1'-0"

Sheet Title
**BUILDING ELEVATIONS:
 INTERPRETIVE CENTER**

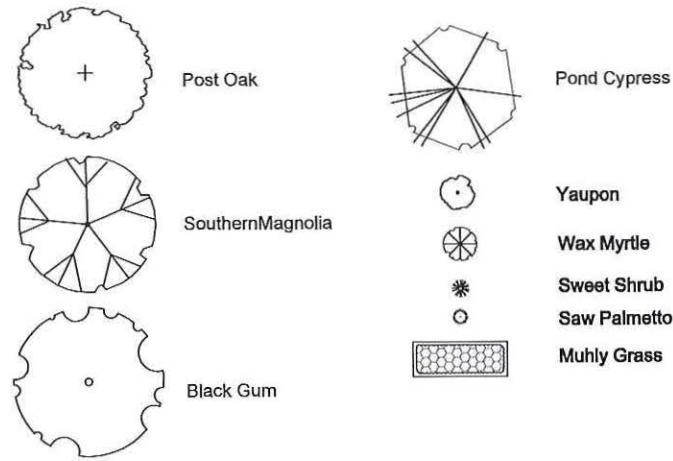
Project Name
**POPPS FERRY CAUSEWAY PARK
 CITY OF BILOXI
 HARRISON COUNTY, MISSISSIPPI**

SEYMOUR ENGINEERING
 PHONE: 228-385-2550
 925 TOMMY MUNRO DRIVE, SUITE G
 BILOXI, MISSISSIPPI 39532
 FAX: 228-385-2553

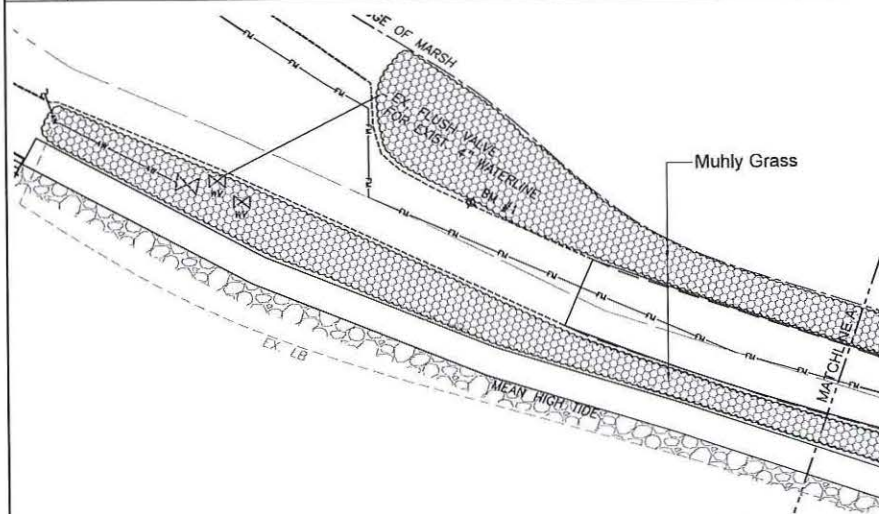
Sheet
A5

Project No.
 15-027

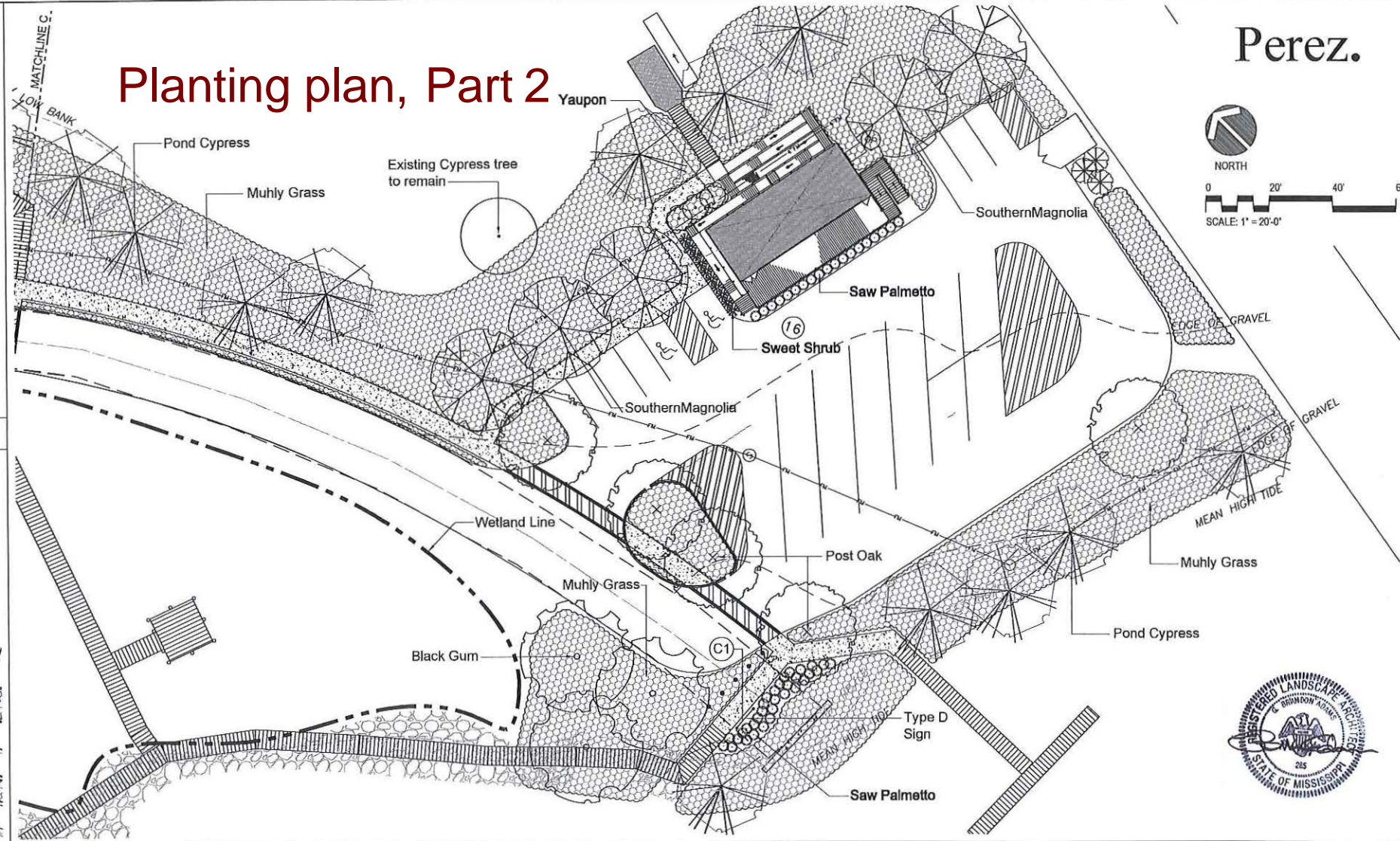
Legend



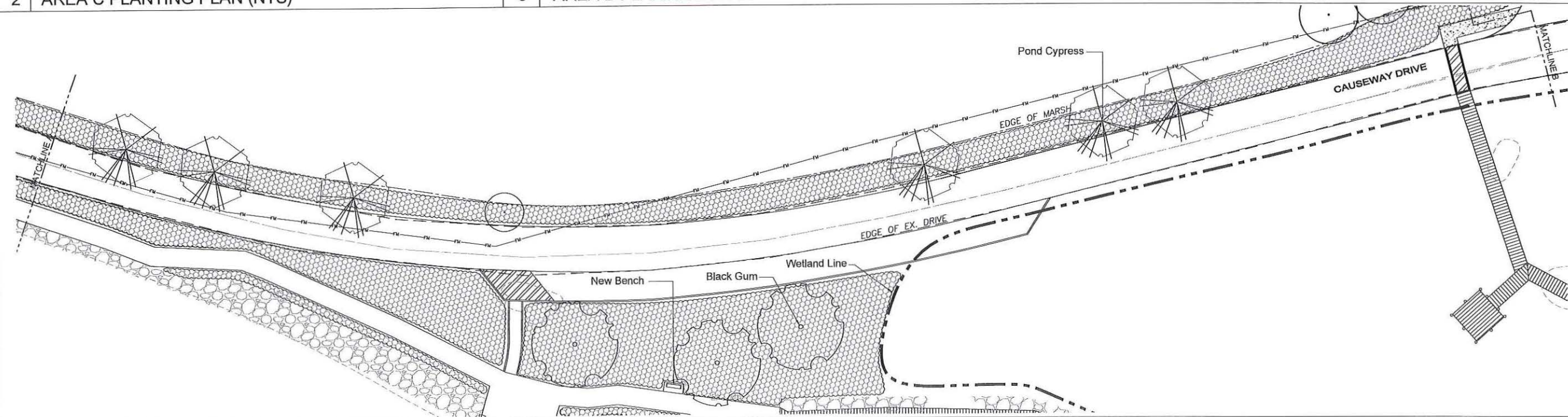
1 PLANT LEGEND



2 AREA C PLANTING PLAN (NTS)



3 AREA B PLANTING PLAN



4 AREA D PLANTING PLAN

Planting plan, Part 2

Perez.

Revised	
Drawn	S. Adams
Checked	
Approved	
Date	10/20/2018

PLANTING PLAN

Sheet Title

Project Name
POPPS FERRY CAUSEWAY PARK
 CITY OF BILOXI
 HARRISON COUNTY, MISSISSIPPI

SEYMOUR ENGINEERING
 925 TOMMY MUNRO DRIVE, SUITE G
 BILOXI, MISSISSIPPI 39532
 PHONE: 228-385-2350 FAX: 228-385-2353

Sheet
 L3

Project No.
 15-027

Bait shop

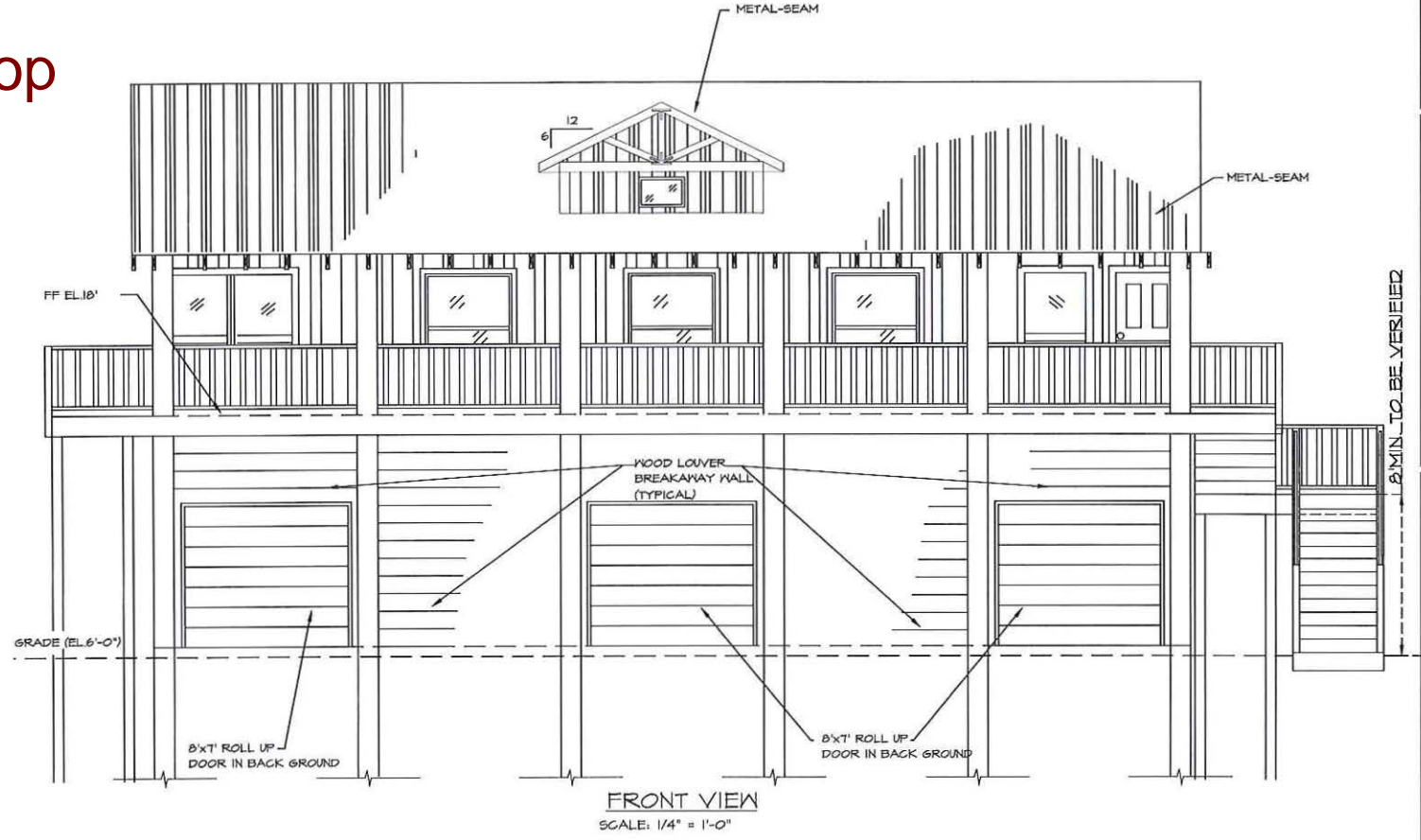
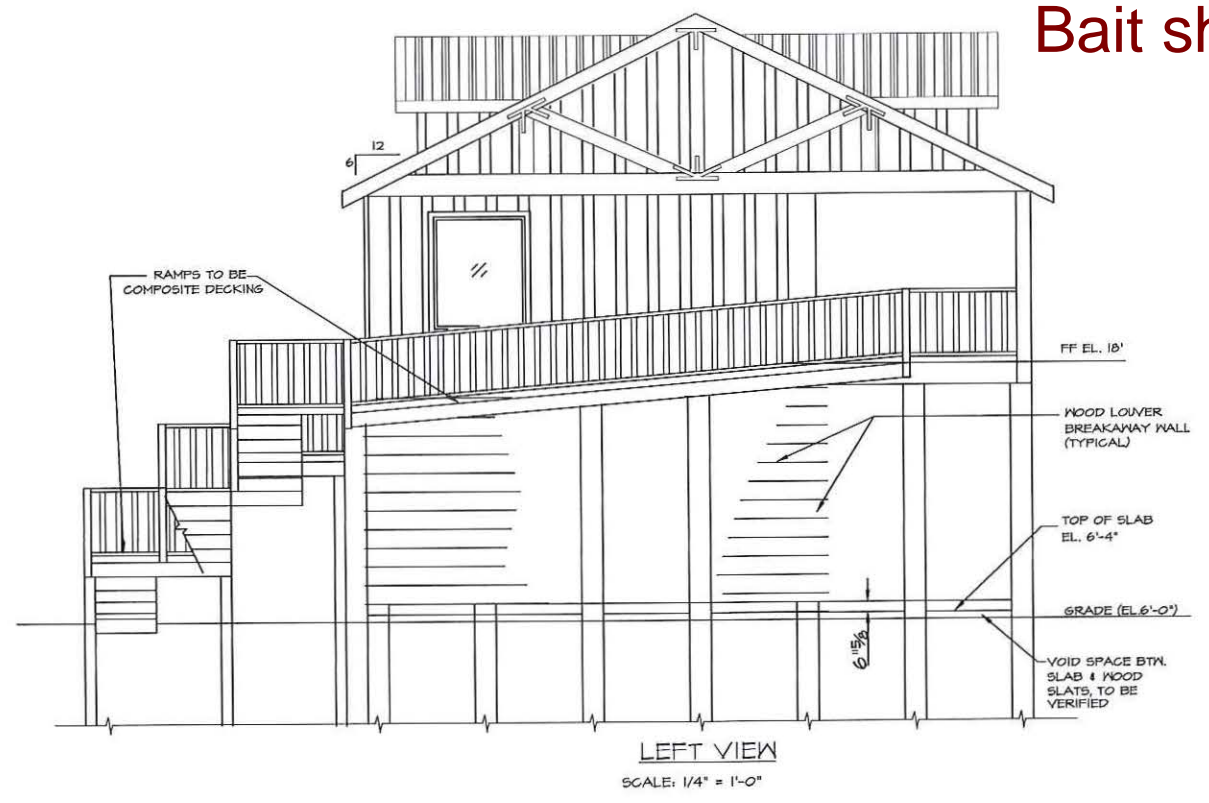
Revised	
Drawn	G.A.
Checked	J. DIAZ
Approved	M. SEYMOUR
Date	10/19/2016

Sheet Title
**BUILDING ELEVATIONS:
 BAIT SHOP**

Project Name
**POPPS FERRY CAUSEWAY PARK
 CITY OF BILOXI
 HARRISON COUNTY, MISSISSIPPI**

SEYMOUR ENGINEERING
 PHONE: 228-365-2350 FAX: 228-365-2353
 925 TOMMY MUNRO DRIVE, SUITE G
 BILOXI, MISSISSIPPI 39532

Sheet
A3
 Project No.
 15-027



ROOF FRAMING SHALL BE ENGINEERED ROOF TRUSSES AT 24" O.C. (U.N.O)
 HURRICANE ANCHORS AND STRAPS TO BE INSTALLED AT ALL ROOF TRUSS
 TO WALL AND WALL TO FLOOR SYSTEM, WALL TO JOIST LEDGER
 AND JOIST LEDGER TO BEAM CONNECTIONS (TYP)

