

Tropical Depression 9

Weather Briefing

Monday, August 29, 2016
4pm CDT



**National Weather Service
New Orleans/Baton Rouge**





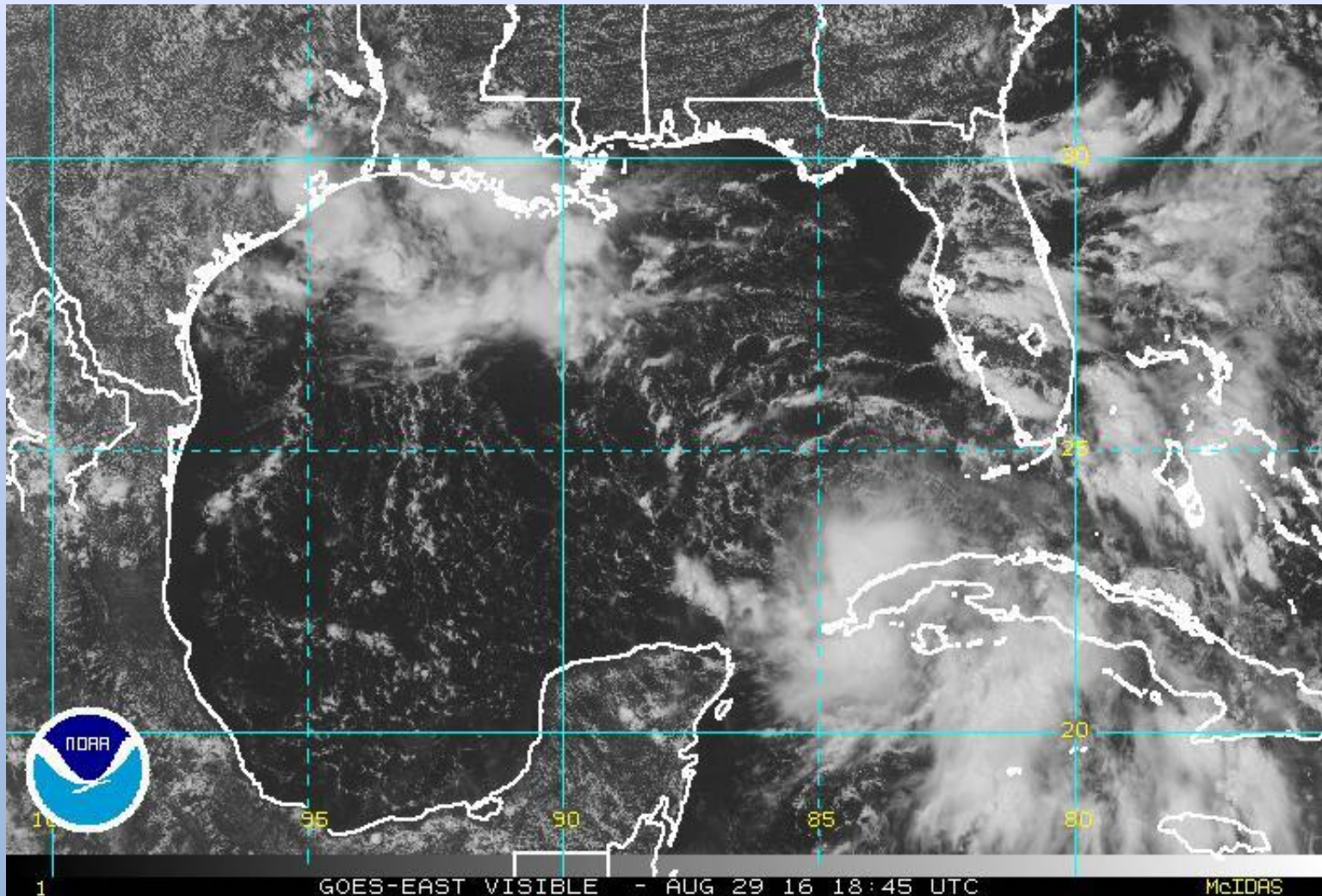
Situation Overview



- **Tropical Depression Nine** is expected to move west and then turn NW toward the mid-gulf the next two days then curve NE later in the week.
- **Remain Alert** as the storm progresses. There is always uncertainty with the forecast in the extended periods and as the system develops. Impacts would increase for us with further west track.
- **Local Impacts**
 - Moderate east then northeast winds through Wednesday across the coastal waters.
 - Tides 1-2 feet above normal on east-facing shores.
 - Potential marine impacts especially in the outer waters.
 - Wind and swell.



Satellite View

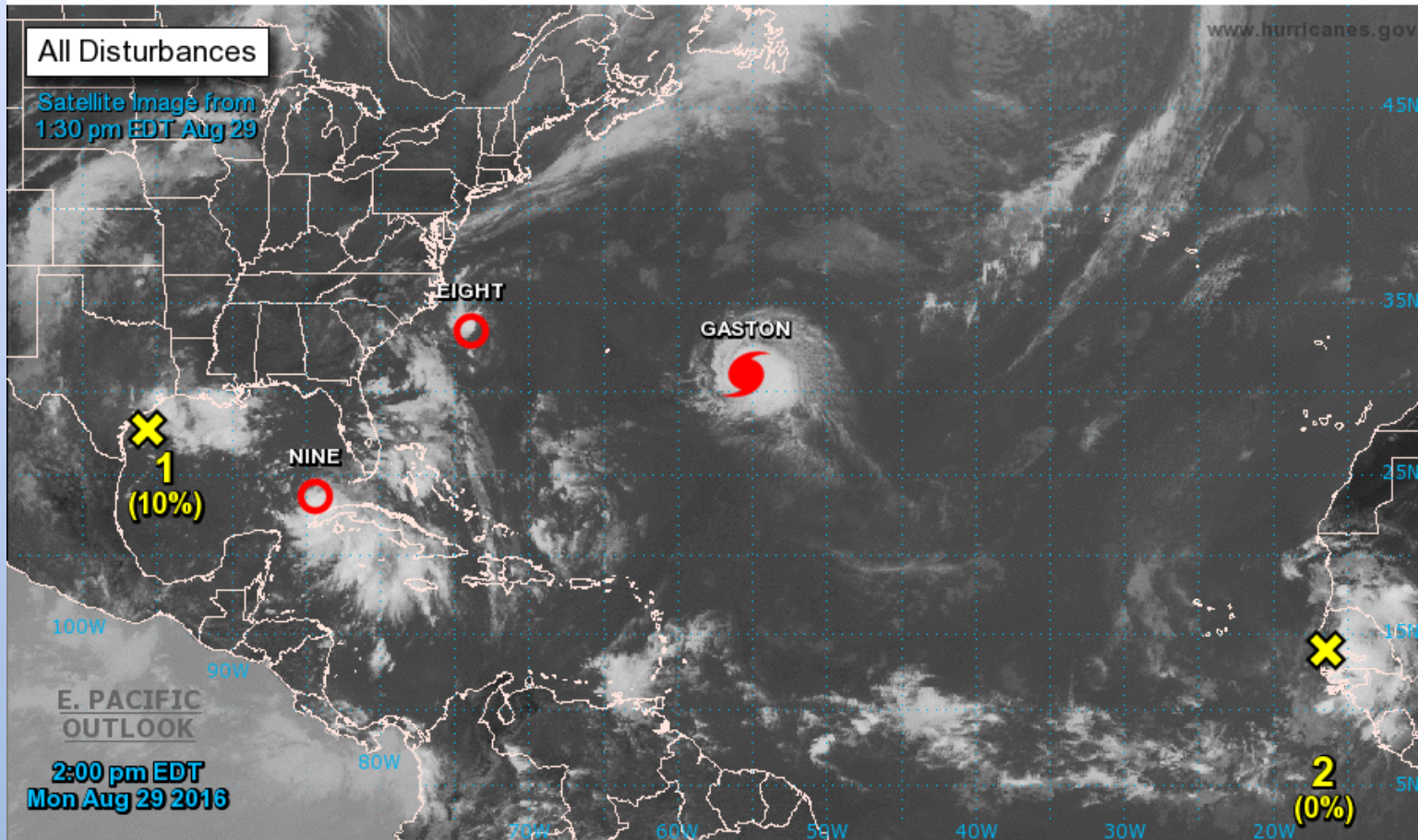




Tropical Weather Outlook



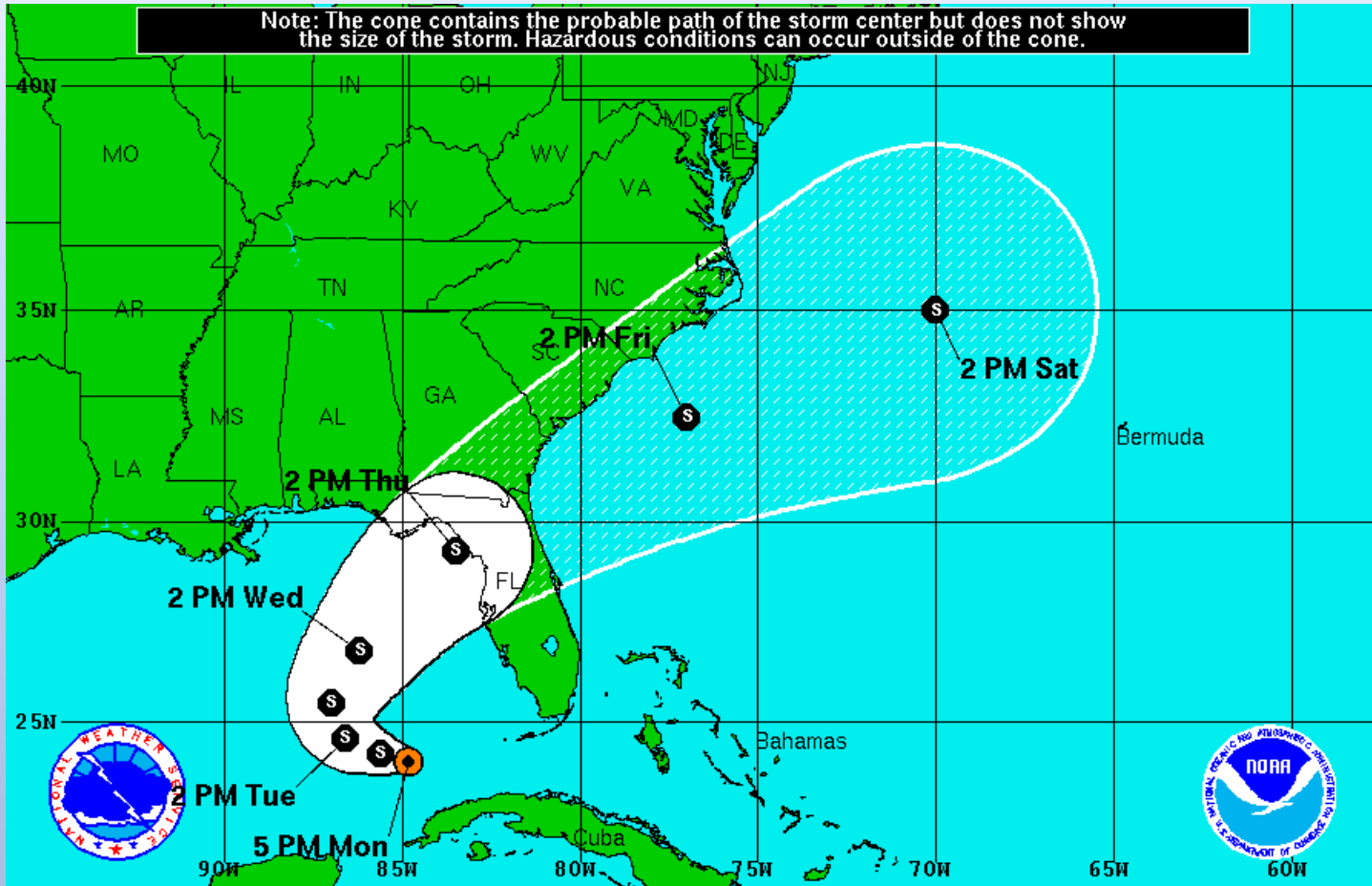
Two-Day Graphical Tropical Weather Outlook National Hurricane Center Miami, Florida



Current Disturbances and Two-Day Cyclone Formation Chance: < 40% 40-60% > 60%
 Tropical or Sub-Tropical Cyclone: Depression Storm Hurricane
 Post-Tropical Cyclone Remnants



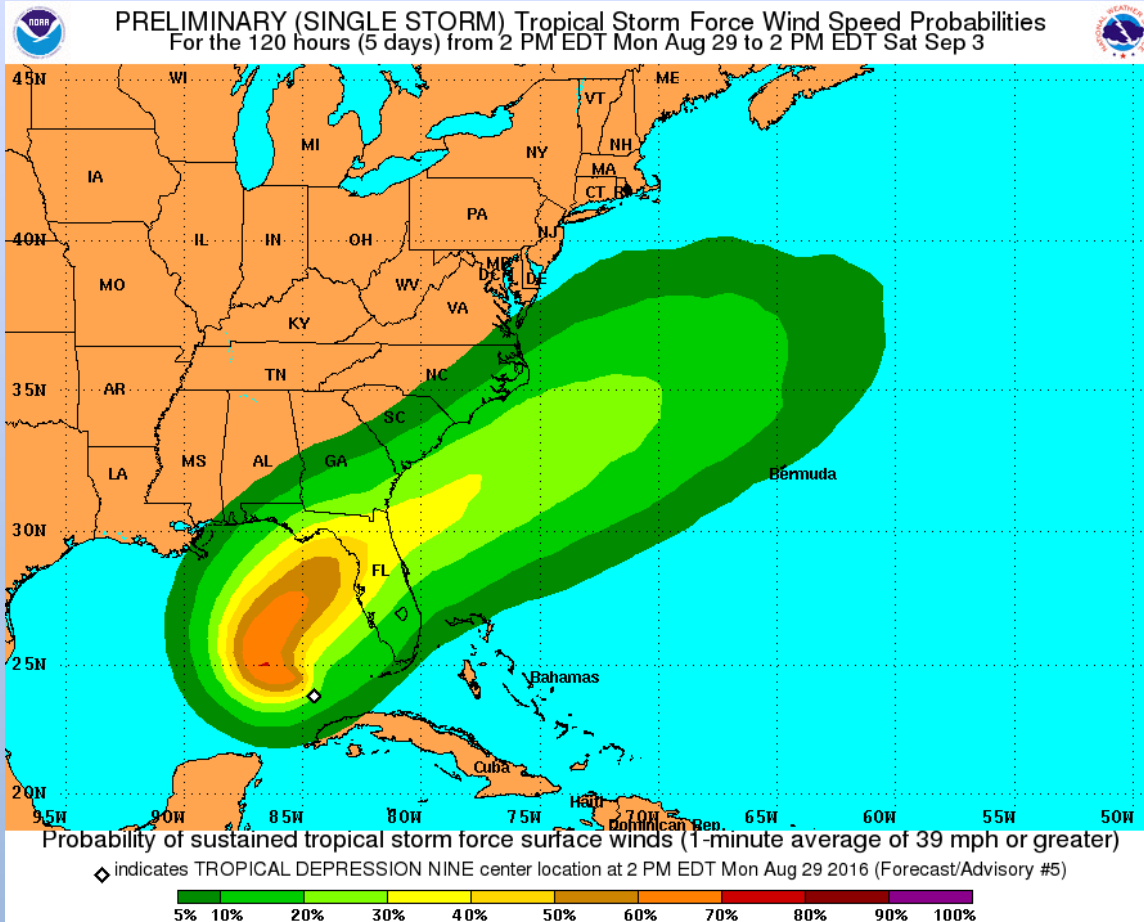
Latest Advisory



<p>Tropical Depression Nine <i>Monday August 29, 2016</i> 5 PM EDT Advisory 5 NWS National Hurricane Center</p>	<p>Current Information: ● Center Location 24.0 N 84.8 W Max Sustained Wind 35 mph Movement WNW at 5 mph</p>	<p>Forecast Positions: ● Tropical Cyclone ○ Post-Tropical Sustained Winds: D < 39 mph S 39-73 mph H 74-110 mph M > 110mph</p>
<p>Potential Track Area: Day 1-3 Day 4-5</p>	<p>Watches: Hurricane Trop.Storm</p>	<p>Warnings: Hurricane Trop.Storm</p>



Tropical Storm Wind Potential



- If track shifts, these probabilities shift.



Summary



- **Tropical Depression Nine** is expected to move west and then turn NW toward the mid-gulf the next two days then curve NE later in the week.
- **Remain Alert** as the storm progresses. There is always uncertainty with the forecast in the extended periods and as the system develops. Impacts would increase for us with further west track.
- **Local Impacts**
 - Moderate east then northeast winds through Wednesday across the coastal waters.
 - Tides 1-2 feet above normal on east-facing shores.
 - Potential marine impacts especially in the outer waters.
 - Wind and swell.