



National Weather Service
New Orleans/Baton Rouge

Tropical Briefing

T.D. Nine

Monday, August 29, 2016
5 am CDT

NEXT UPDATE: 5 pm Mon

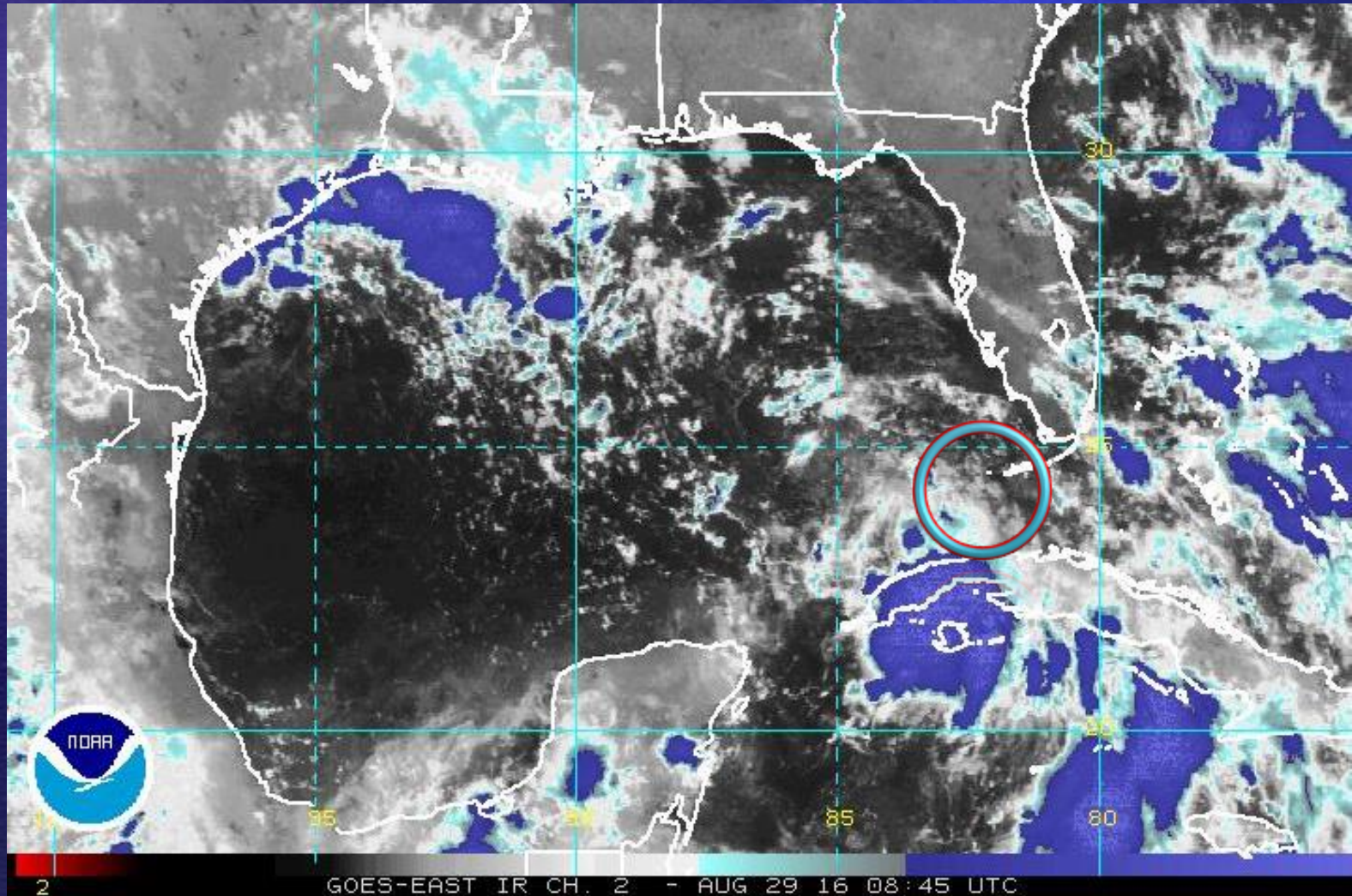


Situation Overview

- **WHAT:** Tropical Depression Nine is expected to move NW toward the mid-gulf next the two days then curve NE later in the week.
Possible Local Impacts:
 - Above normal tides mainly on east-facing shores.
 - Moderate winds across the coastal waters
- **WHERE:** Highest threat locally will be from Bay St. Louis, MS to mouth of the MS River (fringe tidal only)
- **WHEN:** Through Wednesday



Current Satellite



2

GOES-EAST IR CH. 2 - AUG 29 16 08:45 UTC

35

30

25

30

5

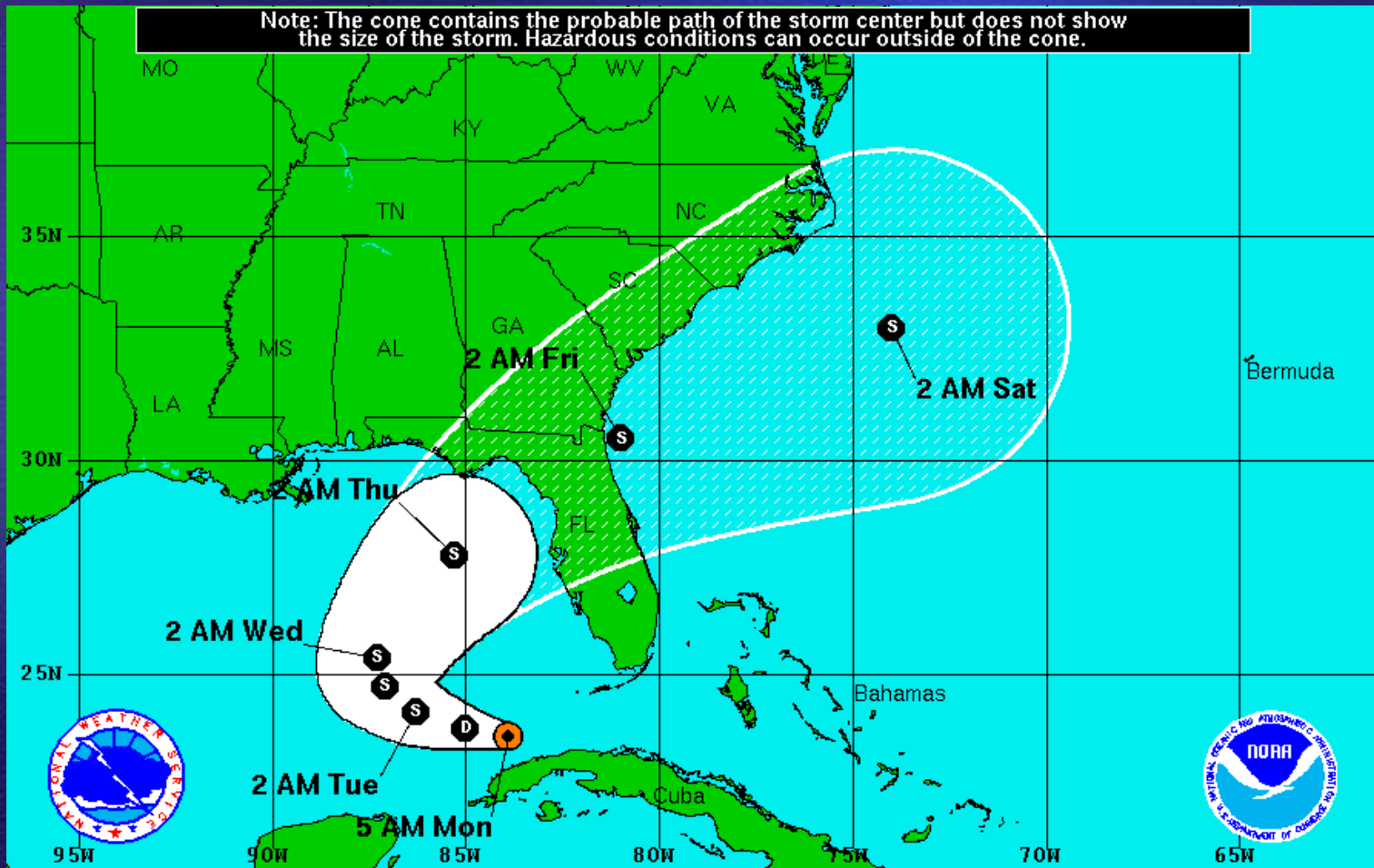
35

80





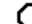
Track Forecast

Note: The cone contains the probable path of the storm center but does not show the size of the storm. Hazardous conditions can occur outside of the cone.



Tropical Depression Nine
 Monday August 29, 2016
 5 AM EDT Advisory 3
 NWS National Hurricane Center

Current Information: 
 Center Location 23.5 N 83.9 W
 Max Sustained Wind 35 mph
 Movement W at 9 mph

Forecast Positions:
 Tropical Cyclone  Post-Tropical
 Sustained Winds: D < 39 mph
 S 39-73 mph H 74-110 mph M > 110mph

Potential Track Area:
 Day 1-3  Day 4-5

Watches:
 Hurricane  Trop.Storm

Warnings:
 Hurricane  Trop.Storm



Summary of Impacts

- Track and intensity forecast still has a large degree of uncertainty, but will likely strengthen into a tropical storm.
- Tropical Depression Nine is expected to move NW then NE toward the NE Gulf of Mexico over the next few days.
- Local impacts will include:
 - Moderate east then northeast winds through Wednesday across the coastal waters.
 - Tides 1-2 feet above normal on coastal east-facing shores.