

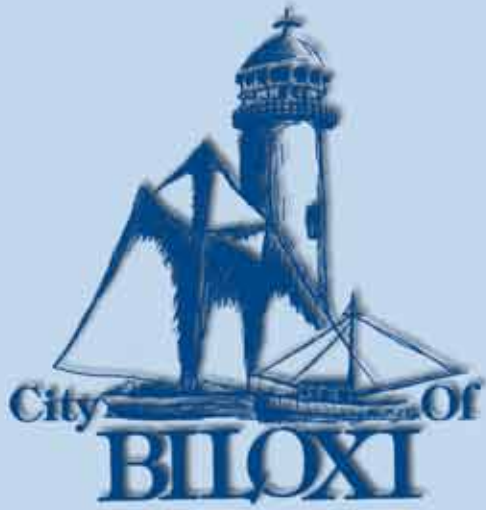
Frequently Called Numbers

(Area code is 228 for all numbers, unless noted otherwise)

- **Animal control** 435-6103
To report stray or dead animals, leash-law violations
- **Auto tag info** 435-8242
County Courthouse at Lameuse Street and MLK Boulevard
- **Birth certificates** 601-576-7960
State Department of Vital Statistics in Jackson
- **Building permits** 435-6270
To obtain permits for construction and improvements
- **Business licenses** 435-6247
To obtain a license to do business in the city
- **City Council** 435-6257
To reach councilmembers or clerks of council
- **City Court** 435-6125
Information on traffic tickets and court docket
- **Code enforcement** 435-6270
To report weeded lots, unsafe buildings, abandoned vehicles
- **Drivers licenses** 432-7803
Dr. Eldon Bolton State Office Building, Bayview Avenue
- **Emergency police and fire** 911
Non-emergency: 435-6100 (police) or 435-6200 (fire)
- **Garbage collection** 392-5108
BFI manages the city's residential garbage collection.
- **Housing Authority** 374-7771
To get information on public housing
- **Human Resources** 435-6259
For info on city employment; on third floor, City Hall
- **Mayor's office** 435-6254
Citizen services, proclamations, public records requests
- **Museums information** 435-6244
Info on city museums or to rent historic properties
- **Parks & Recreation** 435-6281
Info on programs, or to rent most city facilities
- **Planning Commission** 435-6266
To apply for a change in your zoning or land use
- **Public schools** 374-1810
Administrative office for all Biloxi public schools
- **Streets and drainage** 435-6271
To report pot holes, damaged street signs or traffic signals
- **Visitor info** 374-3105 or 1-800-BILOXI-3
Visitors Center is on the Biloxi Town Green
- **Voter registration** 435-6279
To register to vote or change in address
- **Water service** 435-6240
Meter Reading Specialists manages city water department



City of Biloxi Voter Information



P.O. Box 429
Biloxi, MS 39533

PRST STD
US POSTAGE PAID
PERMIT 57
BILOXI, MS 39530

Postal Customer
ECRWSS

Look Inside for Important City of Biloxi Voter Information



January 2005

Fellow Biloxian:

As many of you may know, we've seen significant population shifts in Biloxi in the past several years, with dramatic growth in the western areas of the peninsula and in areas north of the Bay of Biloxi.

This growth, coupled with new areas becoming part of the city through annexation, prompted the city to re-draw its seven ward lines so that all areas of the city will be equally represented. This re-districting means that some longtime residents may be either in new wards or voting at a new polling place.

The new ward lines and polling places, which are shown in the enclosed map, will be in effect for the next city elections.

The city is distributing this election guide as part of the effort to educate residents about the revisions.

In the next few weeks, all voters registered with the city will be mailed new City of Biloxi voting cards, which will display your name and polling place for city elections. During this process, we are also going to be updating the Biloxi voter rolls.

If you have voted in a previous city election, then you should be a registered voter, regardless of your current or future ward. Those who became residents of the city through annexation and have voted with the county are being automatically registered with the city. If you are a resident of Biloxi and do not appear on the voter rolls, you may still vote, by affidavit.

Through this newsletter and other notices, the City of Biloxi is taking steps to ensure that you know when and where to vote. Meantime, if you have any questions, you can reach Voter Registrar Lucien Brown at lbrown@biloxi.ms.us, by phone at 435-6279 or in person at City Hall, 140 Lameuse St., Monday through Friday from 8 a.m. to 5 p.m.

I encourage you to exercise your right to vote and become involved in the process.

Sincerely,

Brenda H. Johnston
Municipal Clerk

Key dates involving the 2005 city election

- **Deadline to register to vote in primary:** April 2, 2005 at noon
- **Republican and Democratic primaries:** May 3, 2005, polling places open 7 a.m.-7 p.m.
- **Deadline to register to vote in General Election:** May 7, 2005 at noon
- **General election:** June 7, 2005, polling places open 7 a.m.-7 p.m.

Are you in the loop? Sign up at <http://biloxi.ms.us>

City of Biloxi Voter Ward Map

Polling places

Ward 1

- 1ABiloxi Community Center
591 Howard Ave.
- 1BLopez-Quave Public Safety Center
170 Porter Ave.

Ward 2

- 2AEast Biloxi Community Center
595 Division St.
- 2BSaenger Theater
416 Reynoir St.

Ward 3

- 3Masonic Lodge No. 630
166 Veterans Ave.

Ward 4

- 4AWest Biloxi Branch Library
2047 Pass Road
- 4BSunkist Country Club
2381 Sunkist Country Club Road

Ward 5

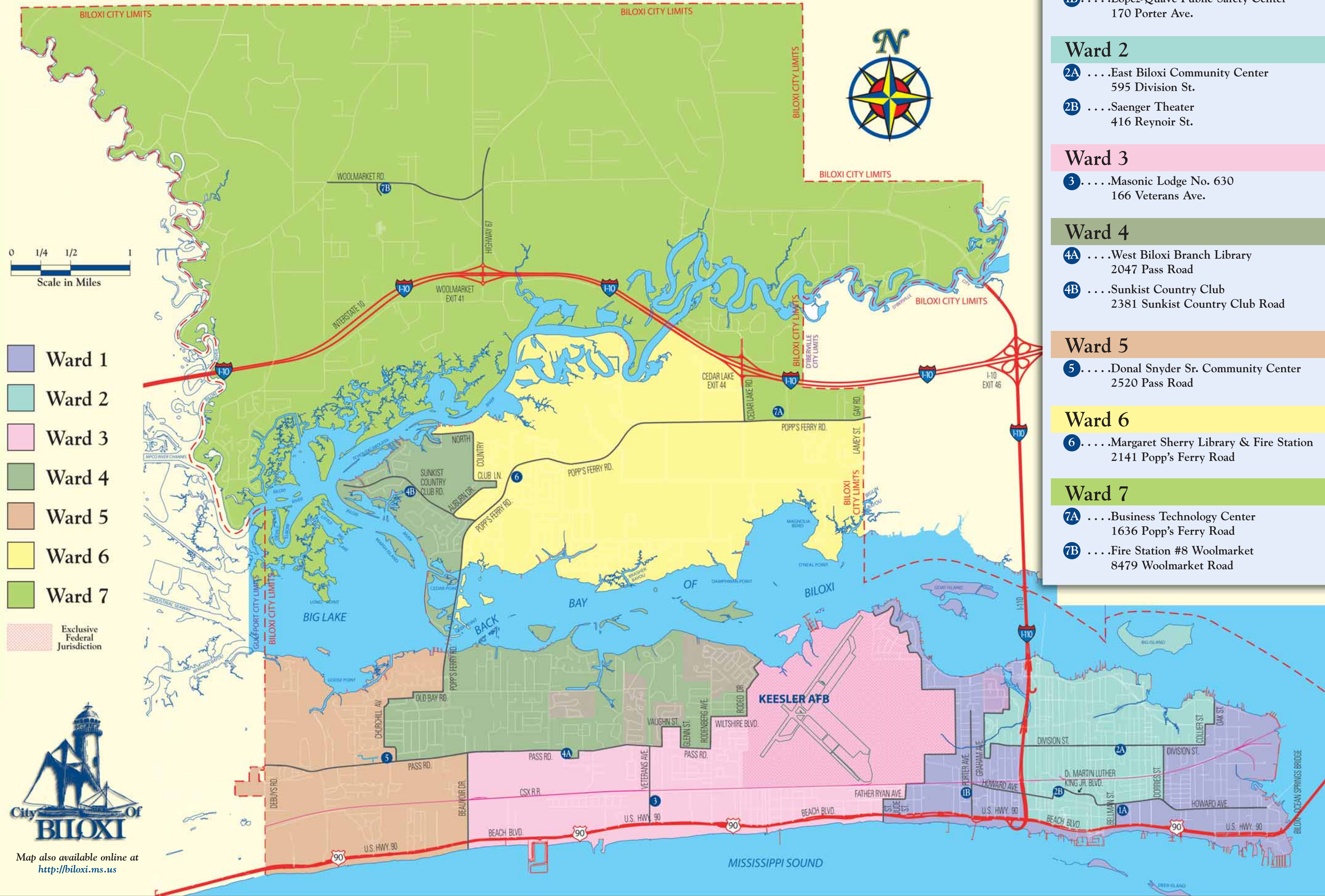
- 5Donal Snyder Sr. Community Center
2520 Pass Road

Ward 6

- 6Margaret Sherry Library & Fire Station
2141 Popp's Ferry Road

Ward 7

- 7ABusiness Technology Center
1636 Popp's Ferry Road
- 7BFire Station #8 Woolmarket
8479 Woolmarket Road



Map also available online at <http://biloxi.ms.us>