

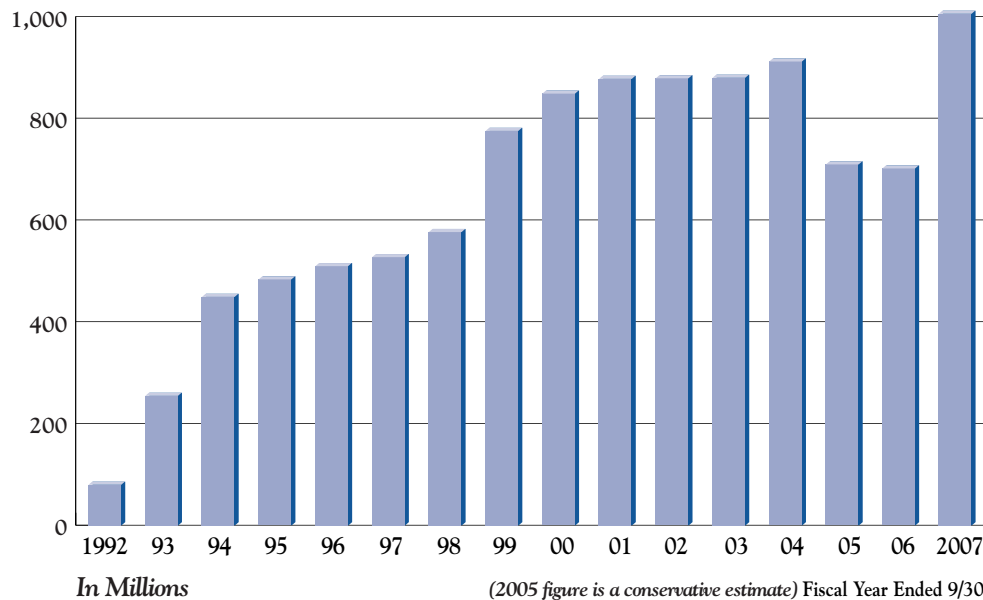
# By the numbers

## Yearly trends

(where available)

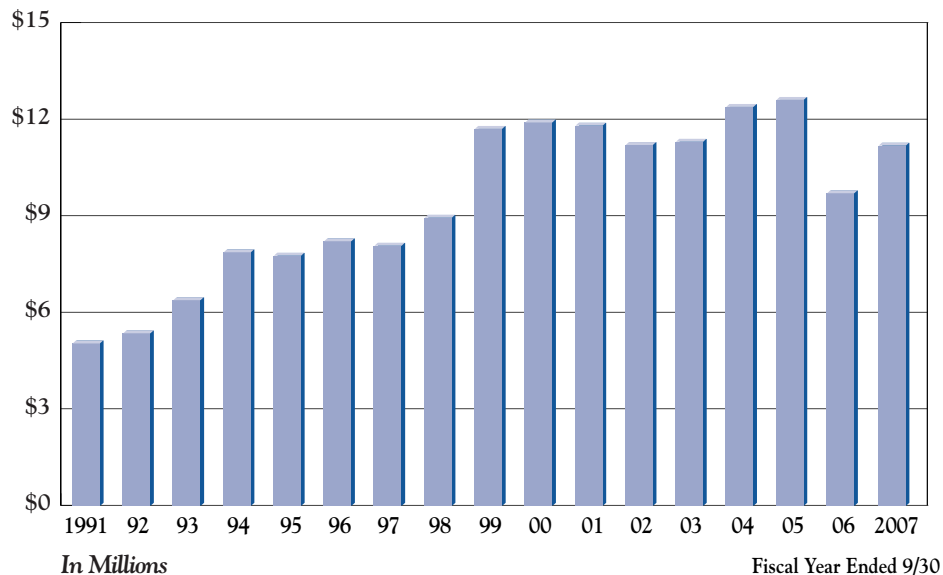
### Gross gaming revenue

Annual figures show growth of Biloxi market



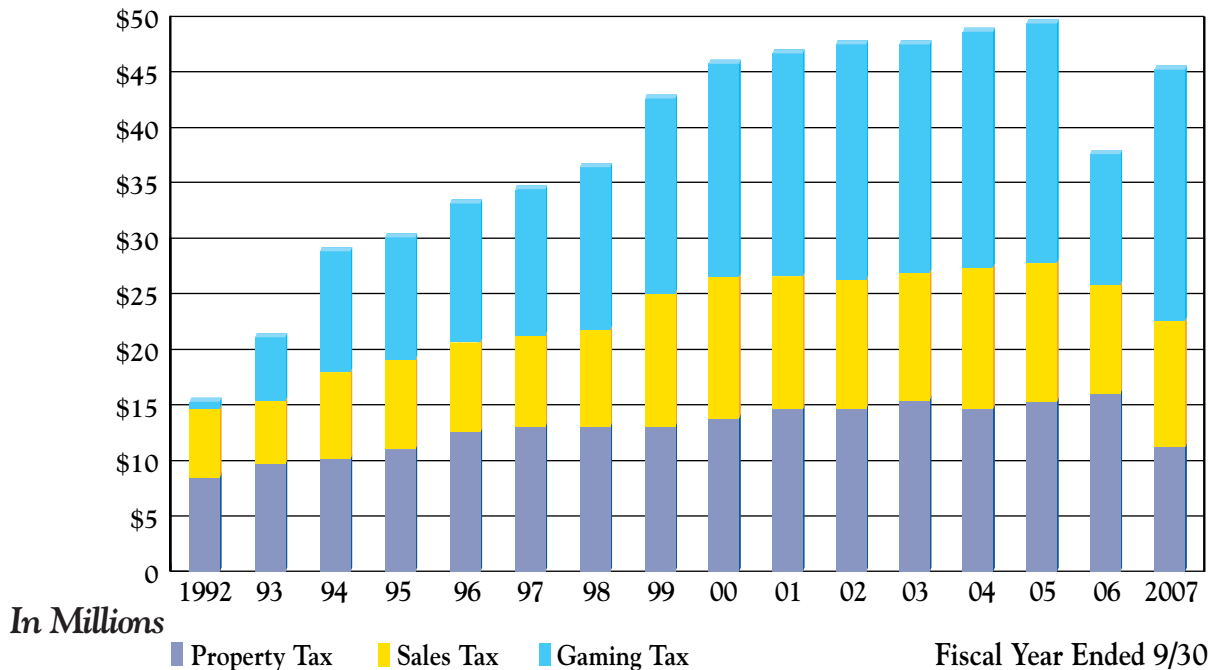
### Sales tax collections

Revenue funded a quarter of city operations



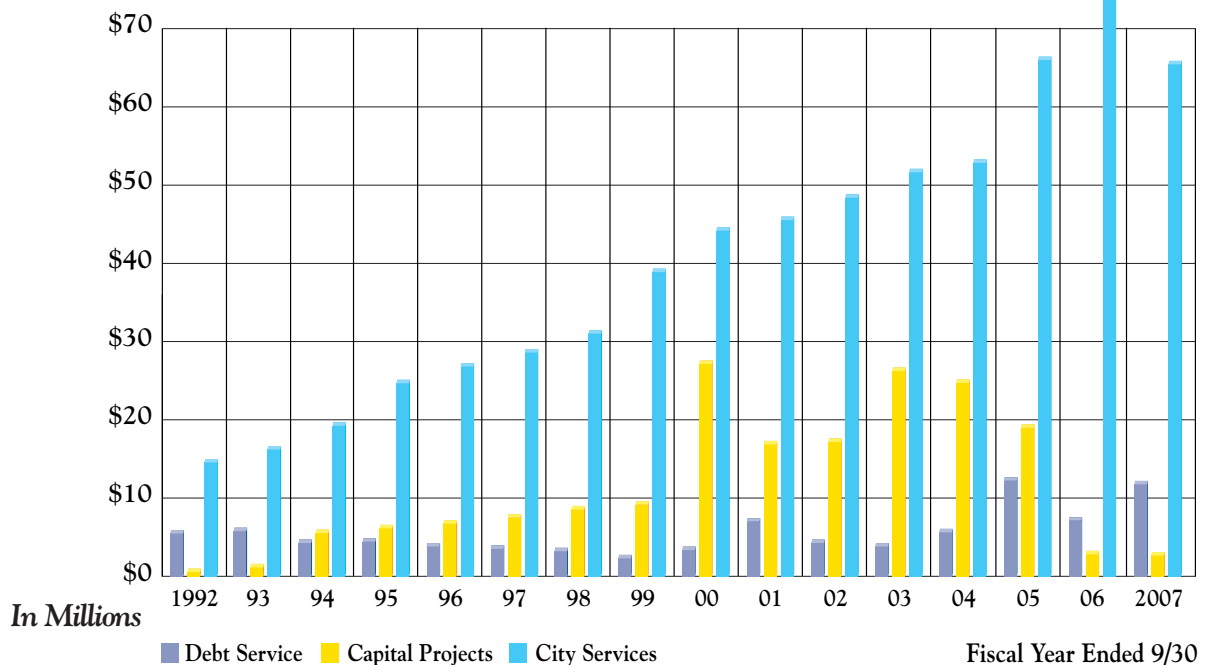
# Revenues

Property, gaming and sales taxes fund city operations



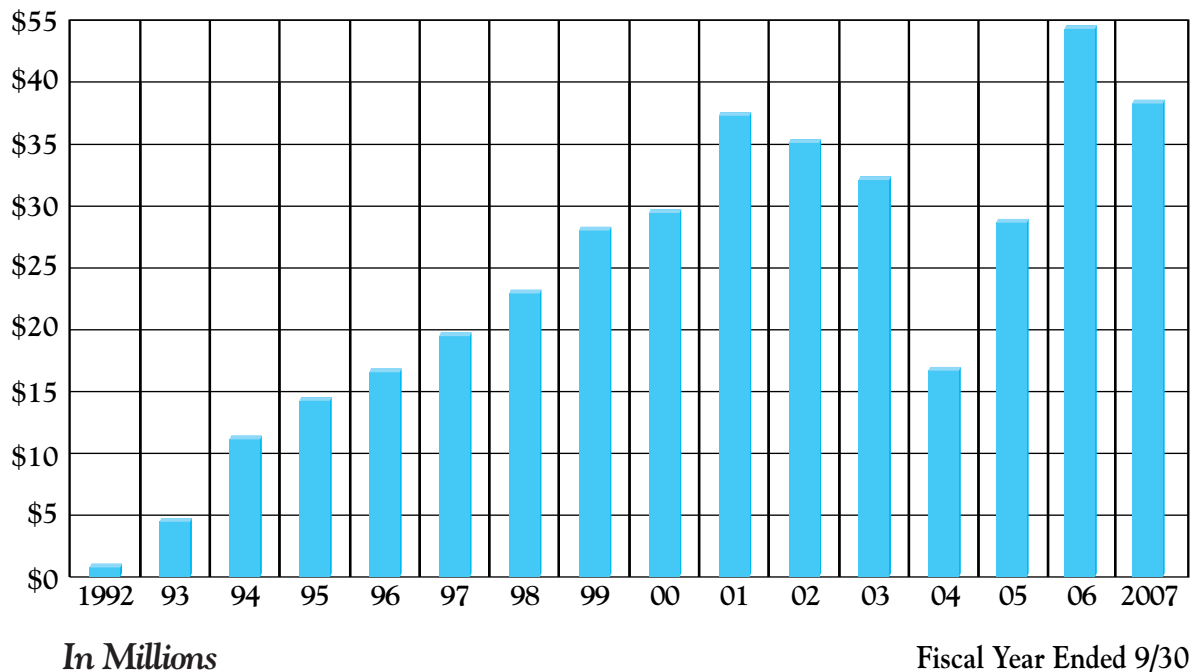
# Expenditures

Capital projects, day-to-day services see growth



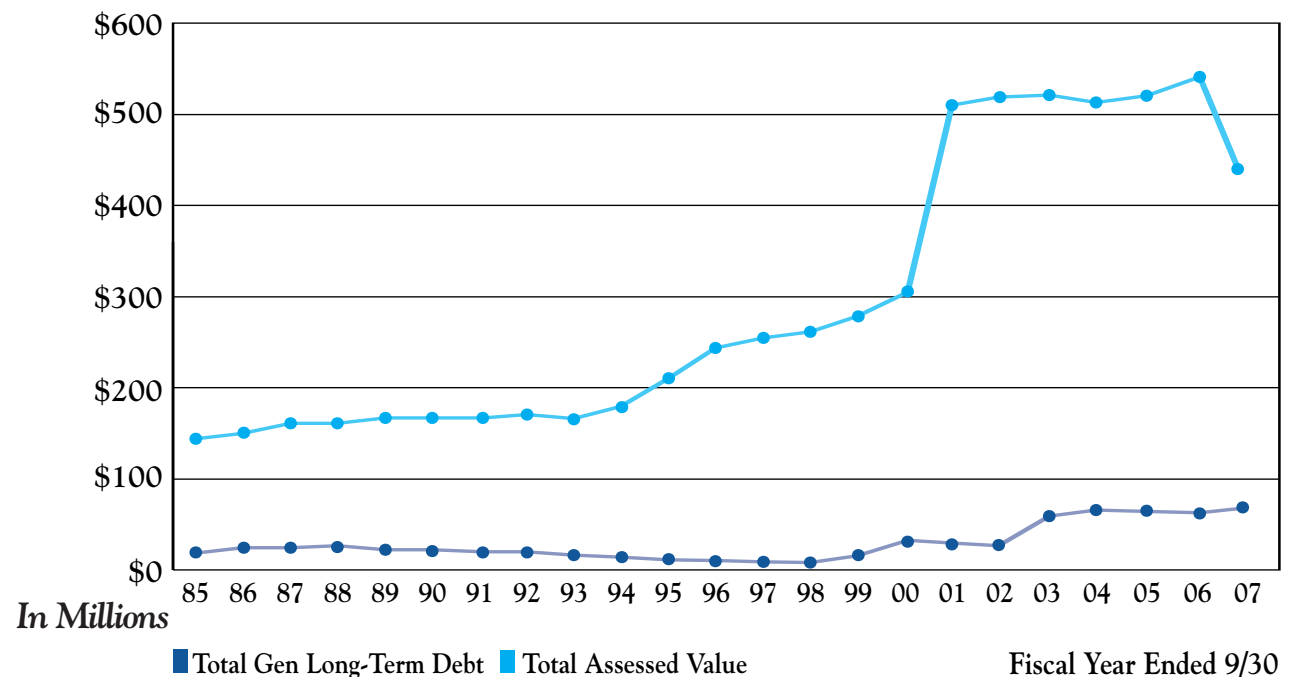
# Financial health

General fund balance showing impact of major projects



# Debt and value

Assessed value of property increasing as debt kept low



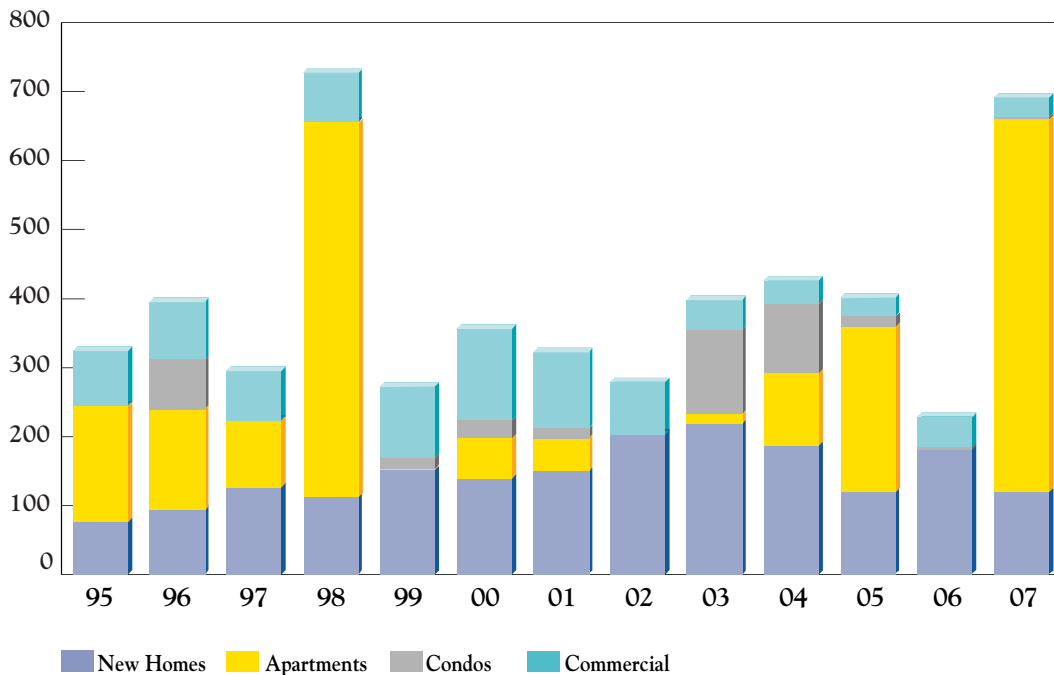
# Hotel and airport traffic

Two intertwined elements of the Biloxi economy



# Building permits issued

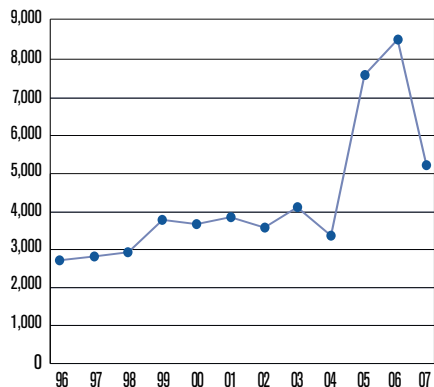
Tracking residential and commercial construction



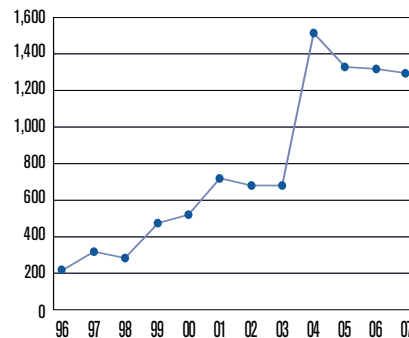
# Community Development

Overseeing orderly growth and cleaning up our city

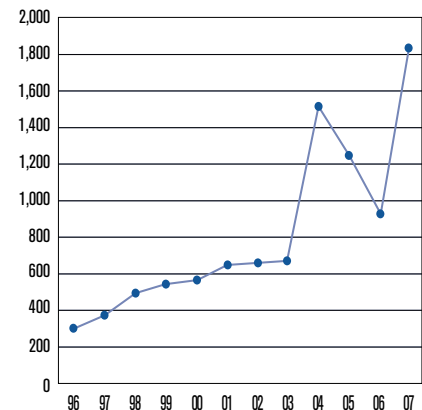
## PERMITS ISSUED



## CODE ENFORCEMENT NOTICES



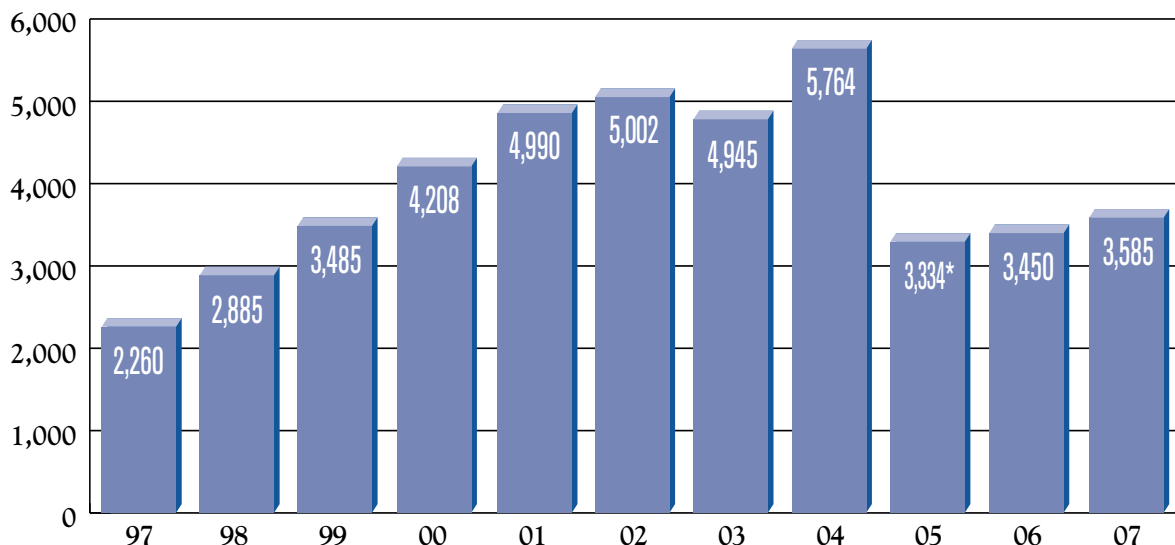
## CODE ENFORCEMENT VIOLATIONS CLEARED



# Youth leagues

More of our children are having a ball

Participation in Soccer, Baseball, Basketball, Football Youth Leagues and Summer Playground Program

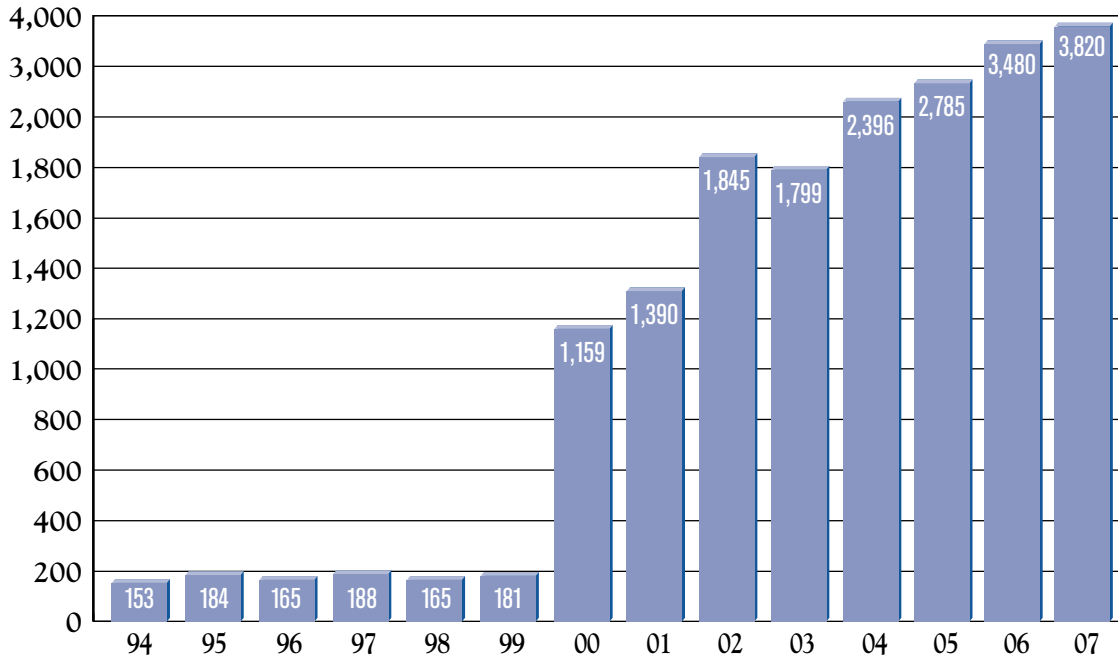


\*Football season, with 650 registrants, canceled because of hurricane.

# Biloxi Fire Department

We make house calls – by the thousands

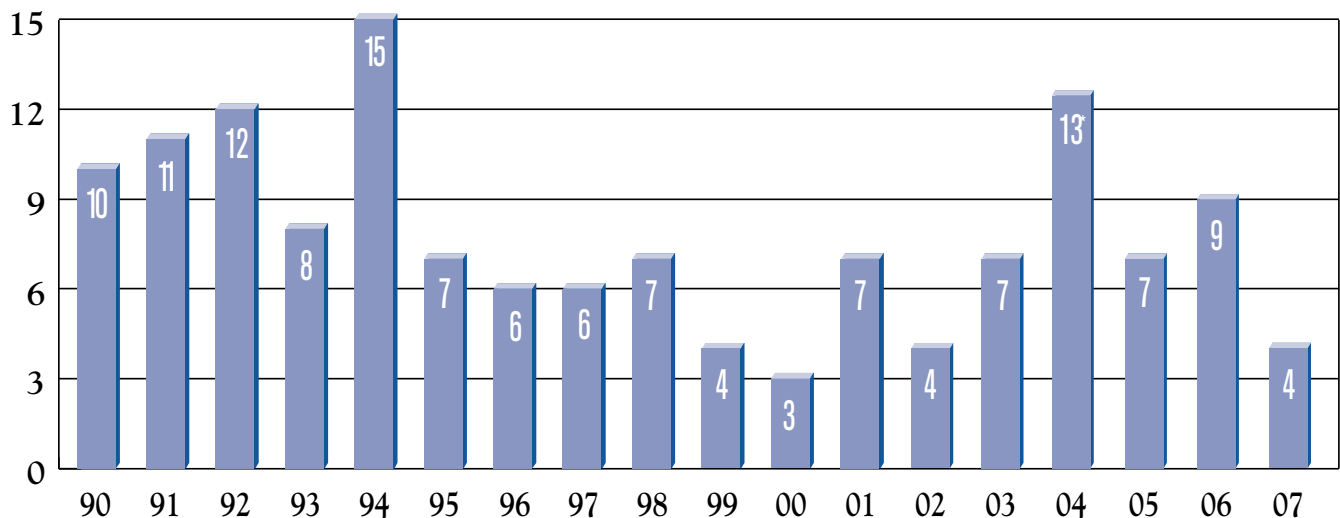
**EMERGENCY  
MEDICAL CALLS  
BY YEAR**



# Biloxi Police Department

Making the streets safe for motorists

**TRAFFIC FATALITIES BY YEAR**



*\*Two traffic accidents accounted for 5 of the 2004 fatalities.*

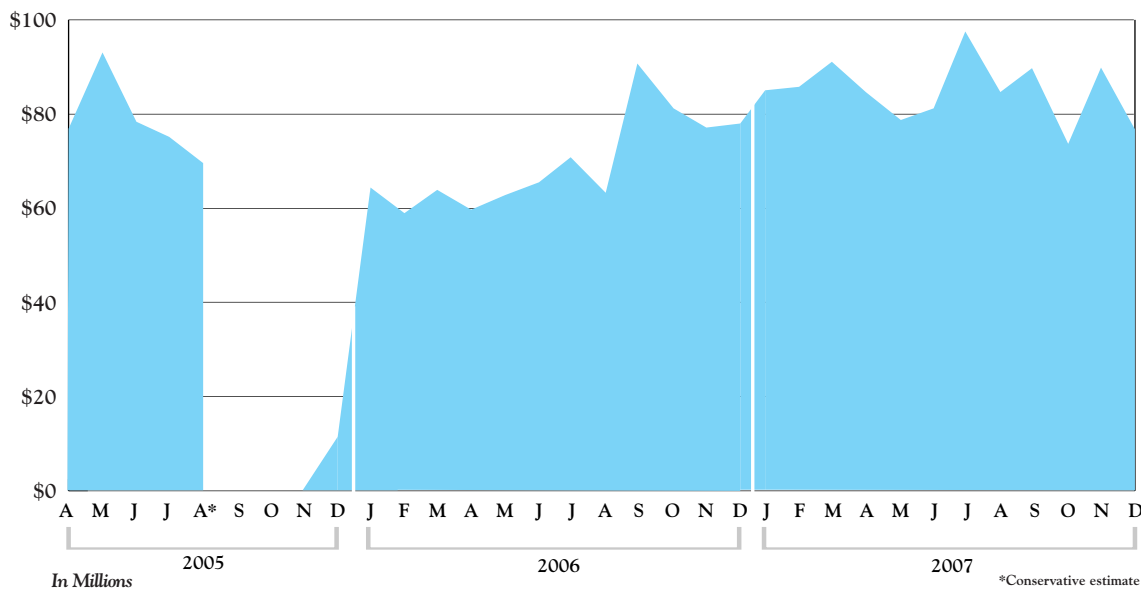
# By the numbers

## Monthly trends

(where available)

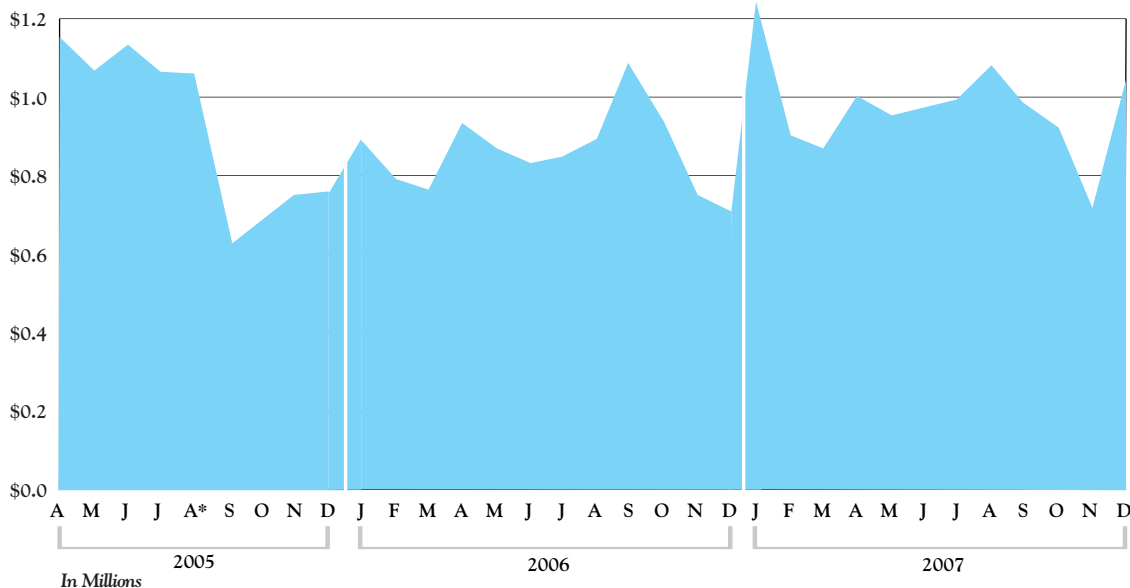
### Gross gaming revenue

Monthly figures show rebound



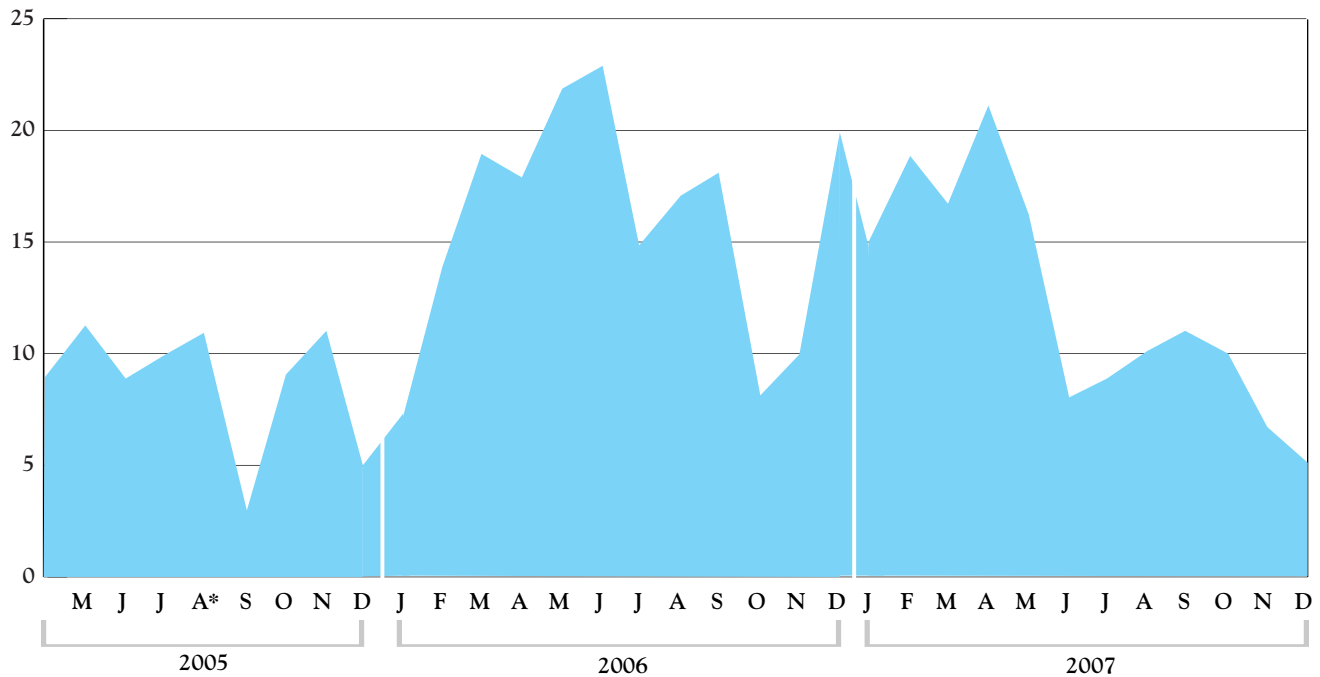
### Sales tax collections

Monthly figures remain encouraging



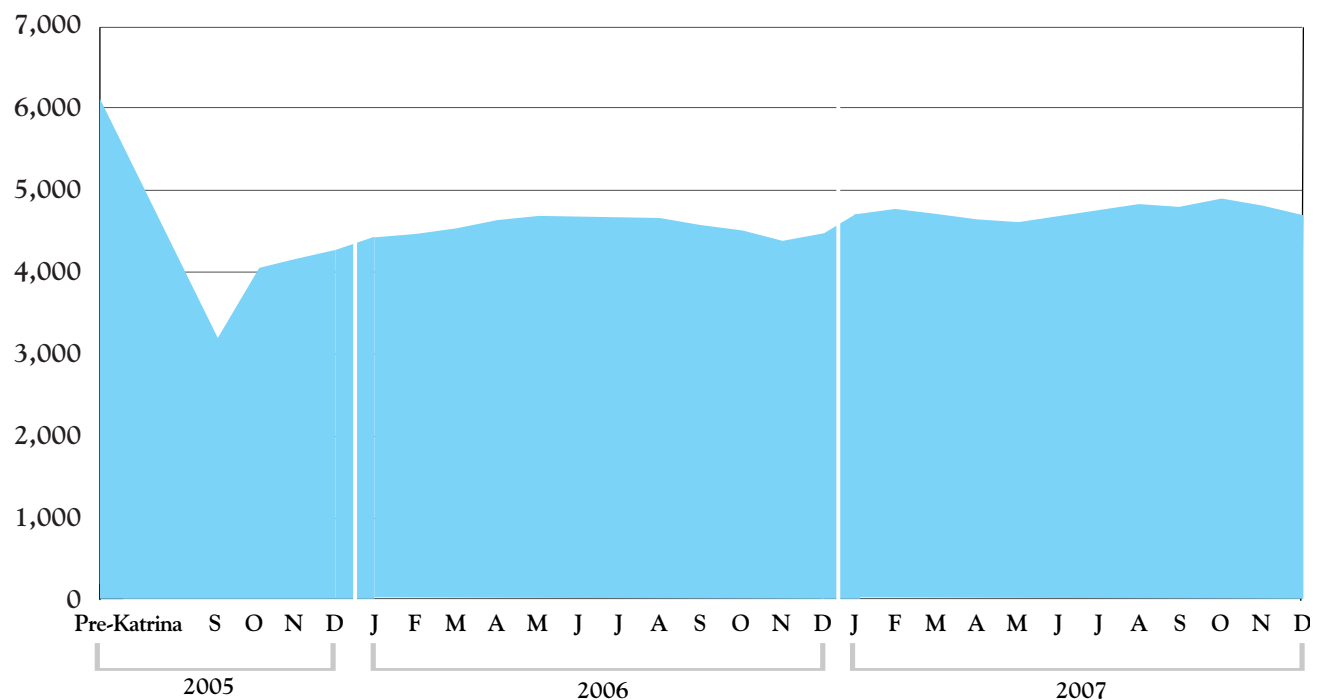
# New home construction

Market showing growth trend



# Public school enrollment

Overall number of students slowly bouncing back to pre-Katrina level



Sources: Annual reports of Biloxi departments of Community Development, Fire, Parks & Recreation, and Police; Dodge Reports, 1995-2005, compiled by Building Division of Community Development Department; Mississippi State Tax Commission; City of Biloxi Finance Division; Biloxi Mayor's Office; Biloxi Public School District; Gulfport-Biloxi International Airport; and city's Comprehensive Annual Financial Report for 2007.