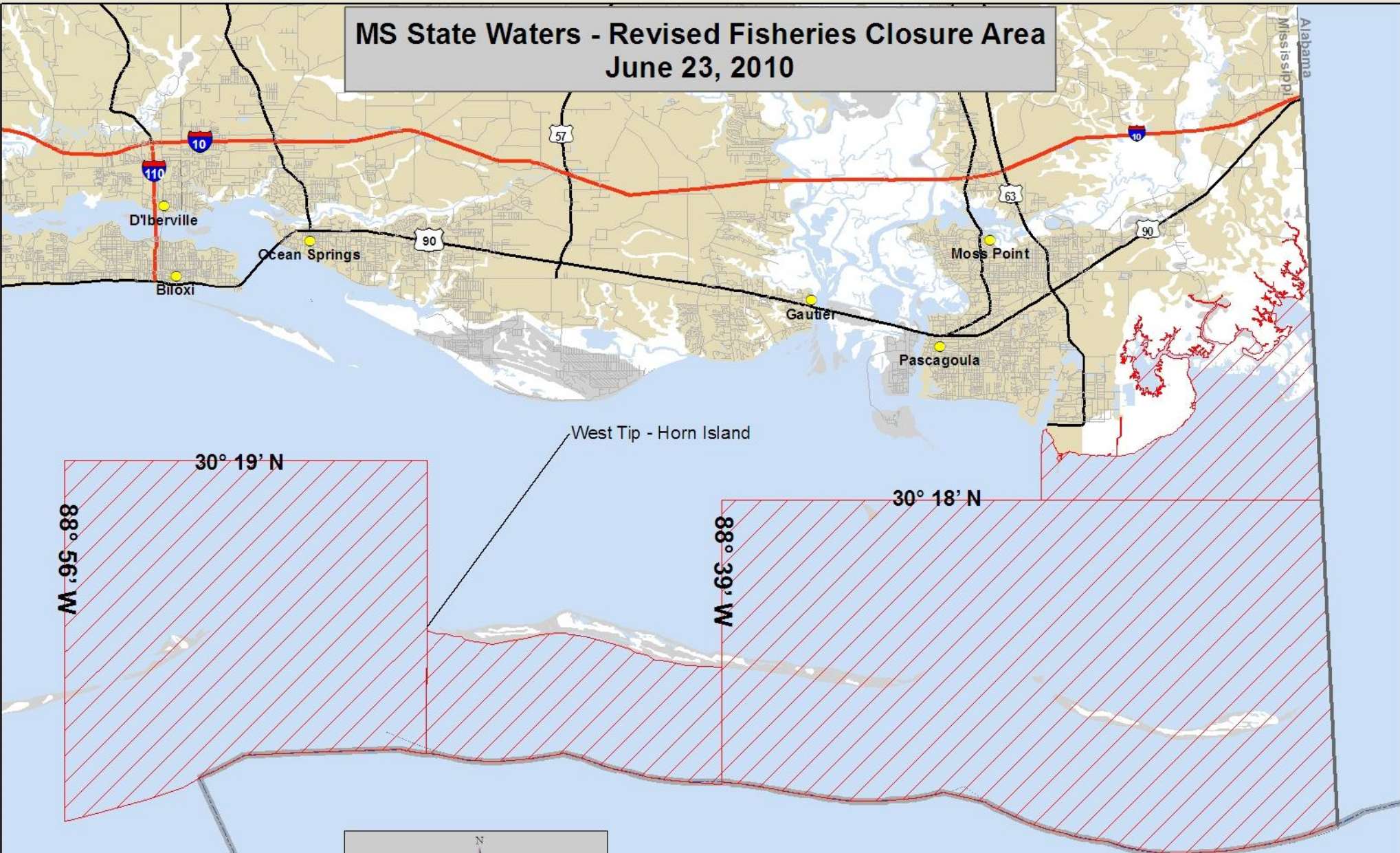


MS State Waters - Revised Fisheries Closure Area June 23, 2010



West Tip - Horn Island

30° 19' N

30° 18' N

88° 56' W

88° 39' W



N

-FOR PLANNING PURPOSES ONLY-

Data Sources: ESRI, NOAA, MDMR, MARIS

Map Production: MDMR-OCMP
Production Date: June 23, 2010

0 1 2 4 6

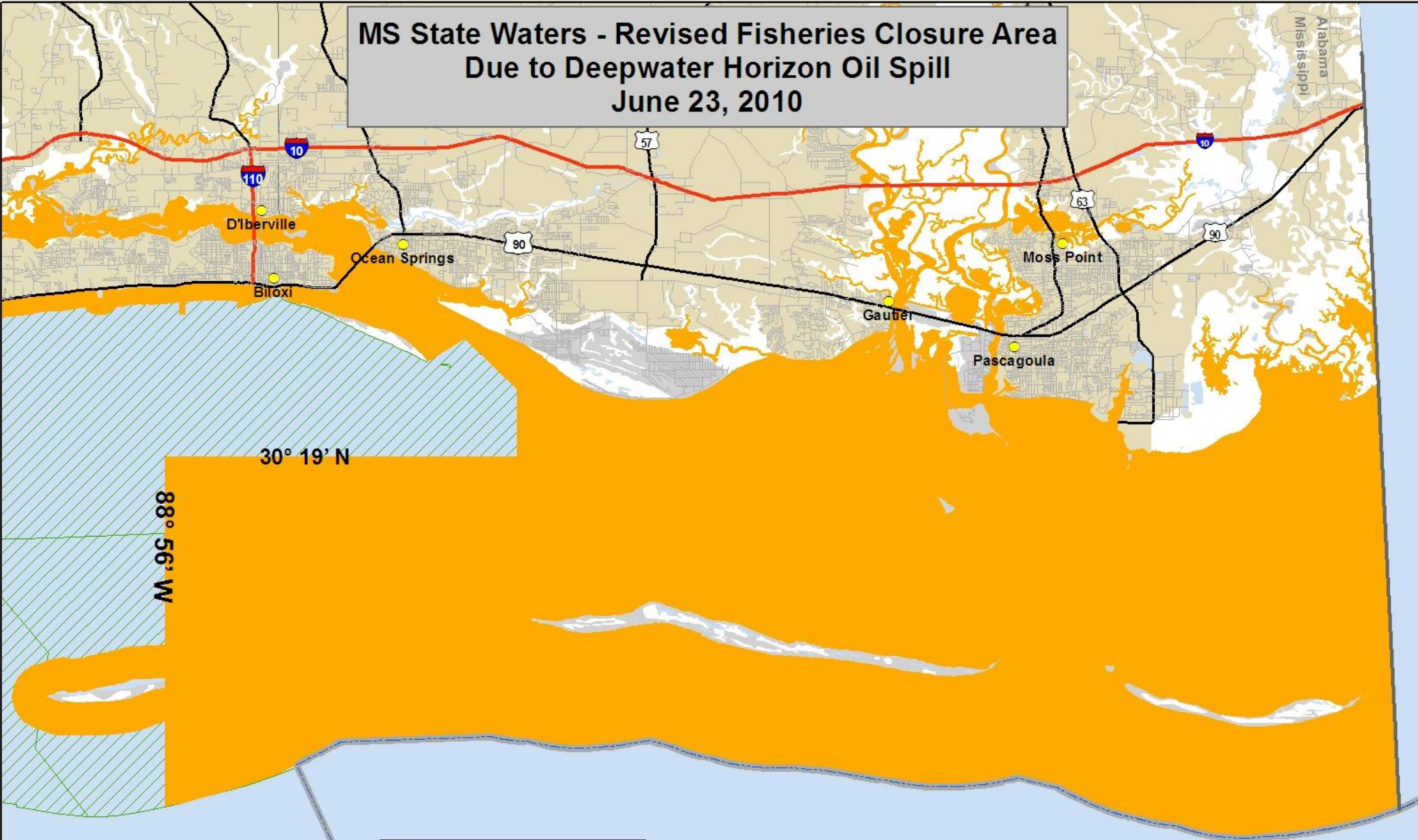
Nautical Miles

-- EFFECTIVE IMMEDIATELY --

MS State Waters Closed to ALL COMMERCIAL AND RECREATIONAL FISHING

State/Federal Boundary

MS State Waters - Revised Fisheries Closure Area Due to Deepwater Horizon Oil Spill June 23, 2010



-- EFFECTIVE IMMEDIATELY --



N

--FOR PLANNING PURPOSES ONLY--

Data Sources: ESRI, NOAA, MDMR, MARIS

Map Production: MDMR-OCMP
Production Date: June 23, 2010

0 1 2 4 6

Nautical Miles

State/Federal Boundary

2010 MS Waters Shrimping Zones

- Closed to all Commercial and Recreational Shrimping
- Open to Commercial and Recreational Shrimping