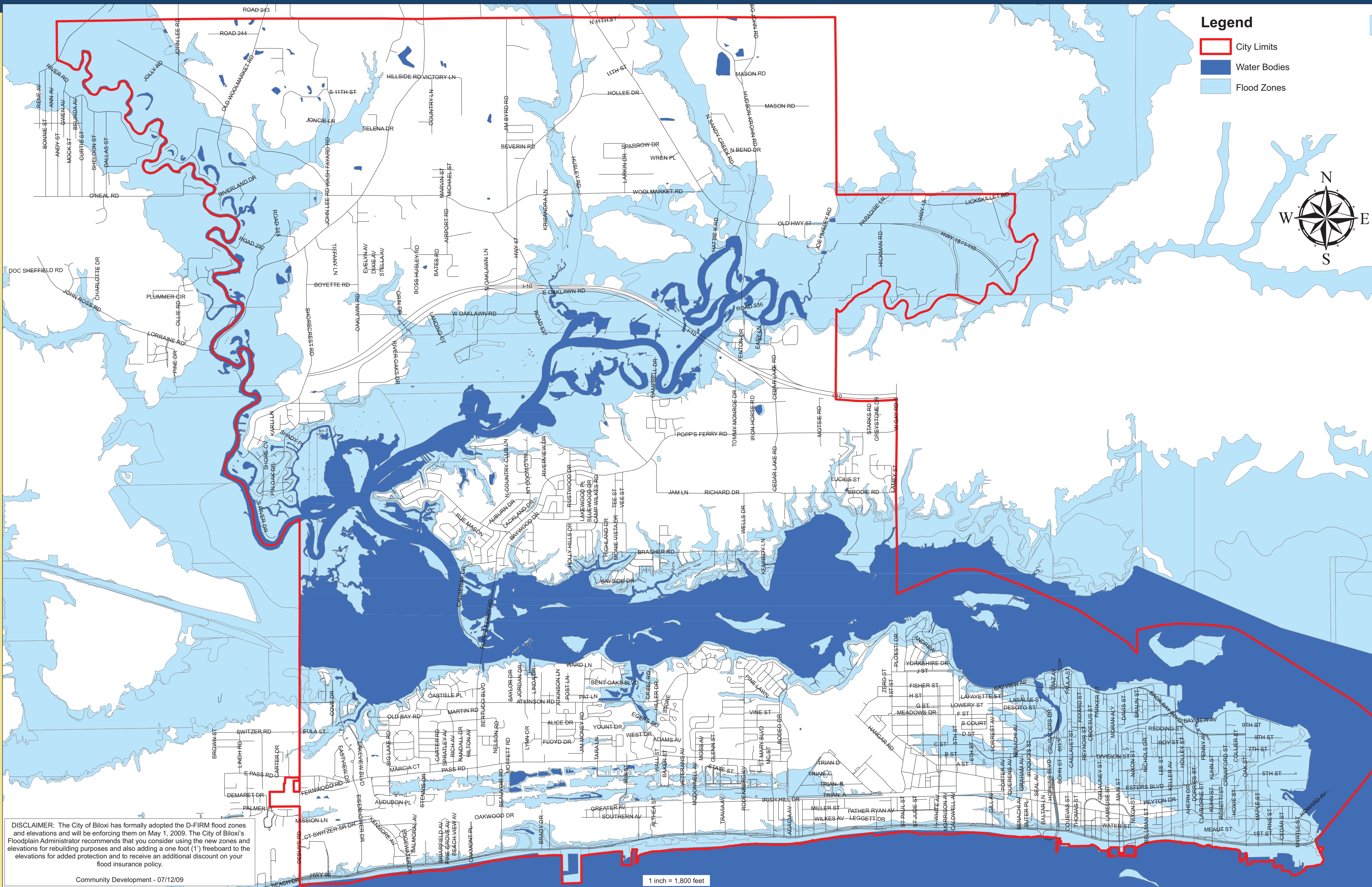


Flood Zones



A few words about this map

Much has been made and said about the federal government's new flood elevations, which went into effect in Biloxi in May 2009. While much of the focus has been on the height of construction, this map shows the significant increase in the size of the flood zone. For instance, nearly all of Point Cadet, the eastern tip of the Biloxi peninsula, is now in a flood zone, as is Eagle Point in north Biloxi.

Completed elevation certificates are available from the city's Community Development Department.

Where to turn for help

The Community Development Department is here to help minimize the risk you face from storms and flooding. If you are having flooding problems, advice is available to help you resolve your flooding issues. To make an appointment, call contact Floodplain Manager Rick Stickler at (228) 435-6270 or rstickler@biloxi.ms.us

Flood Protection Assistance also is available from such sources as the American Red Cross, the Small Business Administration, FEMA's Hazard Mitigation Grant Program, United Way, Salvation Army, Catholic Social and Community Services, Back Bay Mission.

