



---

# Premier Entertainment Biloxi LLC Proposed Hotel Expansion Project

JULY 24, 2012



## Proposed Hotel Expansion Project

---

- **12 – story tower to be constructed on north side of pool, parallel to Highway 90**
  
- **154 total rooms**
  - ❖ 14 suites with balconies; 7 on first level, 7 on top level, all south facing views
  - ❖ 140 deluxe guest rooms, Unique design maximizing views from bedroom and bathroom
  
- **Enclosed connector to existing hotel lobby**
  
- **Surface parking improvements on west side property (Windjammer site)**
  
- **Construction Budget = \$32,500,000 (Not including value of land footprint or Windjammer land acquisition in 2008.)**
  
- **14 to 16 month construction period**



---

## Proposed Hotel Expansion Project Design

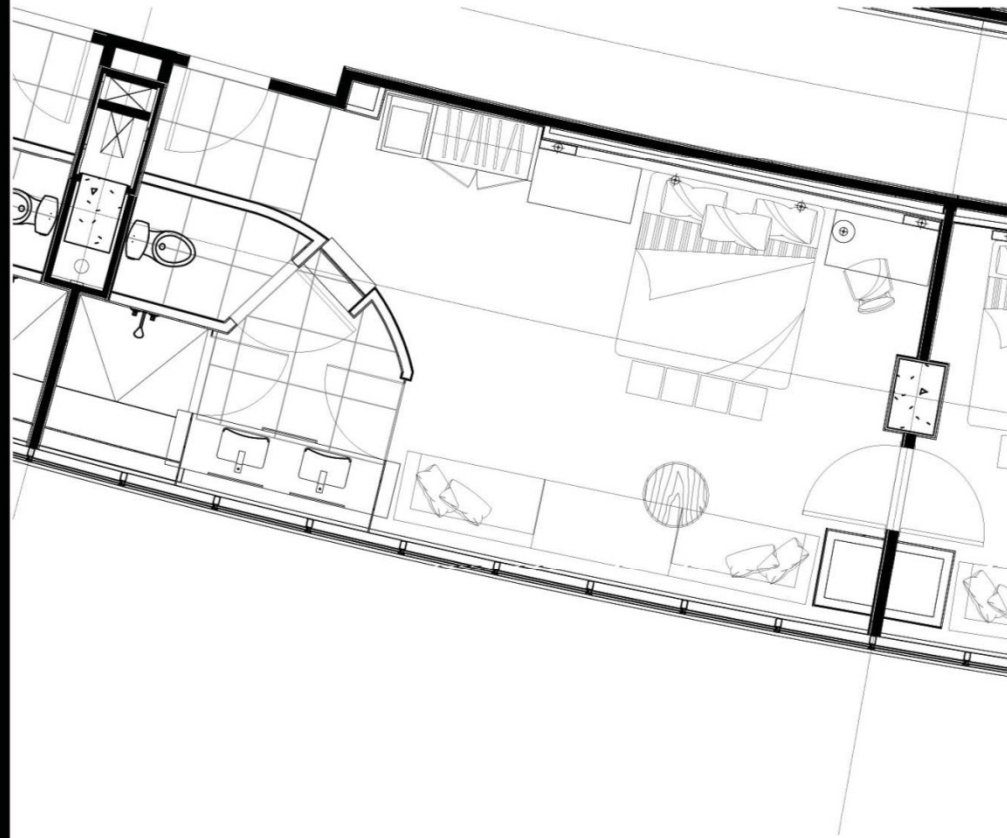






BILOXI

HARD ROCK BILOXI  
TYPICAL ROOM



KING  
FLOOR PLAN  
SC: 1/4" = 1'-0"

TANDEM



HARD ROCK BILOXI  
TYPICAL ROOM

KING ROOM

TANDEM

HARD ROCK BILOXI  
TYPICAL ROOM



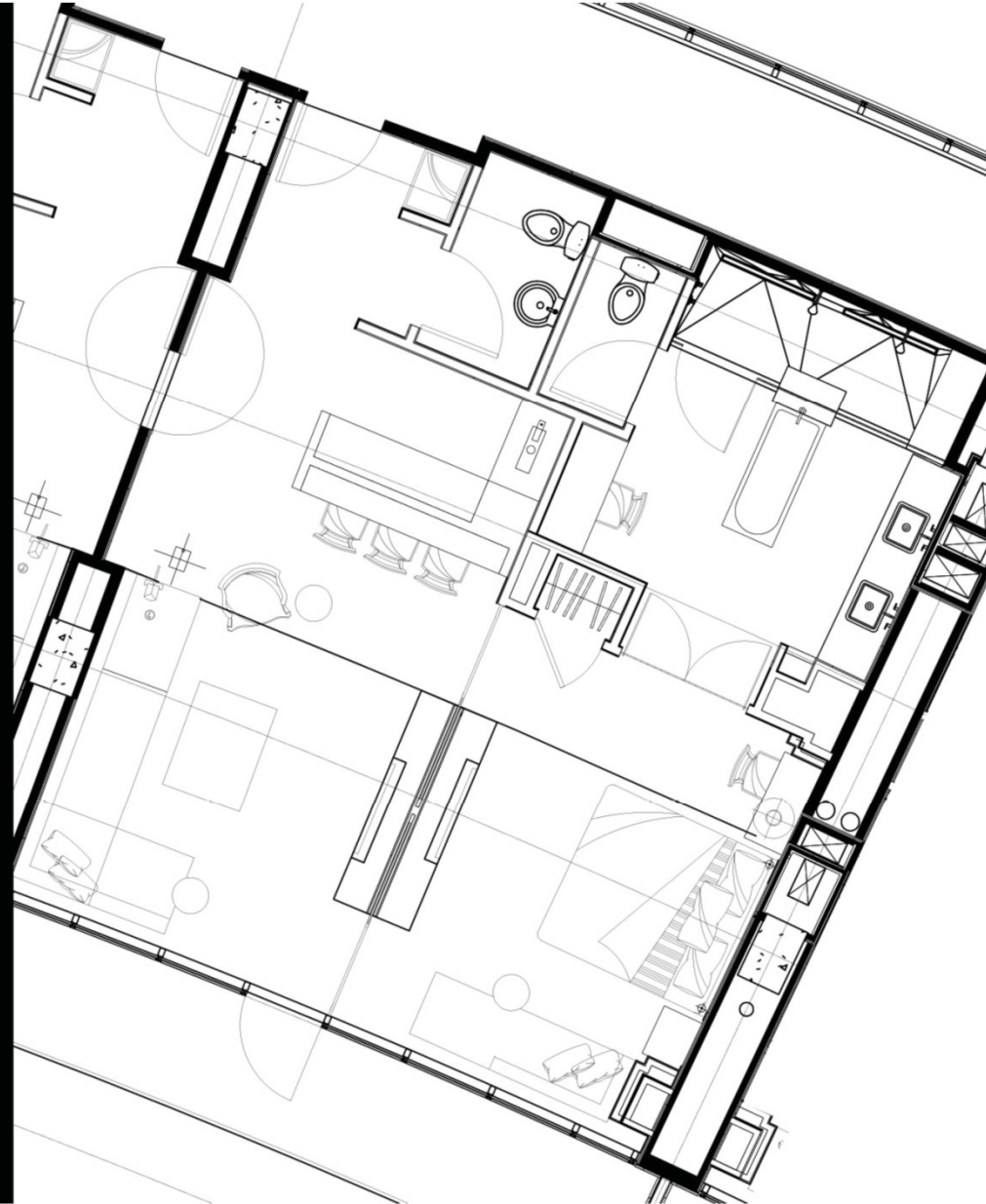
BATHROOM

TANDEM



HARD ROCK BILOXI  
UPPER SUITE

**FLOOR PLAN**  
SC: 1/4"=1'-0"



**TANDEM**

HARD ROCK BILOXI  
UPPER SUITE



LIVING ROOM

TANDEM

HARD ROCK BILOXI  
UPPER SUITE



BATHROOM

TANDEM



## Estimated Economic Impacts

- **\$300,000 to \$400,000 annually in additional city gaming tax collections**
- **\$33,000 to \$44,000 annually in additional city sales tax collections**
- **\$101,000 to \$125,000 annually in additional hotel occupancy tax collections benefiting Harrison County tourism and Coliseum and Convention Center**
- **\$131,000 annually in additional Biloxi School District ad valorem tax collections**
- **\$110,000 annually in additional city ad valorem tax collections after seven year abatement period**
- **90 additional permanent jobs created**
- **250 construction jobs during construction period**